

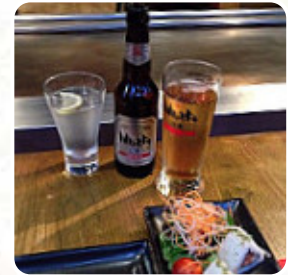
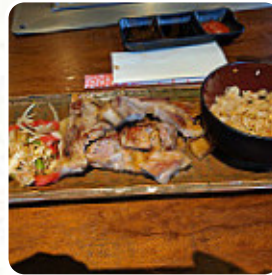


Sen Nin Menu

<https://menulist.menu>

206 Upper Street, London, N11RQ, United Kingdom

(+44)2077041890,(+44)2070961276 - <http://www.sen-nin.com/restaurant-9.html>



The place from London offers **61** different meals and drinks on the menu at an average £10. What [David Stewart](#) likes about Sen Nin:

we went to a girl lunch and really enjoyed it. friendly people eating delicious. I thought the room was a bit cold, sitting near the door with him all the time. but perhaps in the night with all grills on them would feel different. [read more](#). In London, traditional dishes are prepared in the kitchen of Sen Nin with typical *Asian spices fine*, A **catering service** offered by the restaurant allows you to enjoy the dishes at home or at the party. Sen Nin focuses on a lot of freshly harvested vegetables, fish and meat in its easily digestible Japanese cuisine, fine particularly are the Maki and specialties like Inside-Out that this restaurant is known for.

Sen Nin Menu



Salads

KAISO SEAWEEED SALAD £6

Appetizers

IKA NO KARAAGE £8

Soups

TOM YUM TALAY SOUP £3

Nigiri

GRILLED EEL £5

Main courses

SUSHI

Extras

PLAIN SOBA NOODLES £3

Side dishes

STEAMED JAPANESE RICE £3

Sushi Special

SUSHI MORIAWASE £17

Main Dish

SEABASS £9

Mantel Vegan

TERIYAKI SALMON

Drinks

DRINKS

Kids Hibachi

HIBACHI MIXED VEGETABLES £4

Condiments and Sauces

PRAWNS

Restaurant Category

COCKTAIL

These types of dishes are being served

LOBSTER

Sashimi

SASHIMI ROYALE £16

SQUID £5

Dishes are prepared with



SALMON £9

DUCK

SALMON

BEEF

MANGO

TERIYAKI

WE HAVE £10

Uncategorized

SEAFOOD £14

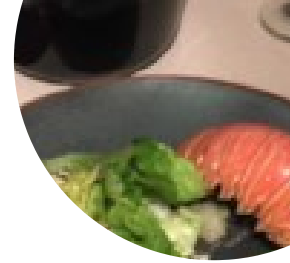
BLACK COD £30

WHOLE LOBSTER £30

WAGYU BEEF £30

THAI CHICKEN GREEN CURRY £11

Sen Nin Menu



PRAWN PENANG RED CURRY	£13	EDAMAME BEANS (WITH SEA SALT)	£3
JAPANESE CHICKEN KATSU CURRY	£12	EDAMAME BEANS (WITH CHILLI)	£3
CHICKEN	£13	JAPANESE SPRING ROLLS	£6
BEEF	£14	VEGETABLE GYOZA	£6
SEABASS	£13	CHICKEN GYOZA	£6
STEAMED GREEN POK CHOI	£4	DUCK GYOZA	£7
EGG & VEGETABLE FRIED RICE	£4	YAKITORI	£7
SEN NIN MAKI	£14	BBQ PORK RIBS	£8
CRAZY MAKI	£13	WHOLE BABY CHICKEN	£13
SPICY TUNA MAKI	£10	WAGYU BEEF TATAKI	£10
DRAGON MAKI (CHEFS SPECIAL)	£14	KING PRAWN TEMPURA	£8
VOLCANO MAKI	£10	ROCK PRAWN TEMPURA	£9
YASAI MAKI	£8	VEGETABLE TEMPURA	£6
CALIFORNIA MAKI	£10	HIBACHI CHICKEN	£11
JAPANESE LAMB CHOPS	£8	SALMON YUZO TERIYAKI	£12
JAPANESE MISO SOUP	£3	HIBACHI STEAK	£17

Sen Nin Menu



Sen Nin

206 Upper Street, London,
N11RQ, United Kingdom

Made with menulist.menu

Opening Hours:

Monday 12:00-15:00 17:00-22:30
Tuesday 12:00-15:00 17:00-22:30
Wednesday 12:00-15:00 17:00-
22:30
Thursday 12:00-15:00 17:00-22:30
Friday 12:00-15:00 17:00-23:30
Saturday 12:00-23:30
Sunday 12:00-23:30

