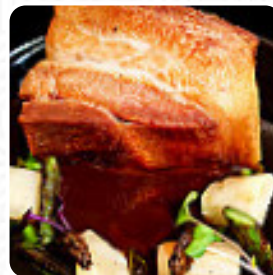




Pint of View Menu

<https://menulist.menu>

Borgo Tegolaio 17r 50125, Florence, United Kingdom
(+39)55288944 - <http://www.pintofview.it/>



The Card of Pint of View from Florence contains about 36 different menus and drinks. On average, you pay for a dish / drink about £8. What [Samira Costantini](#) likes about Pint of View:

the eating was delicious and quite expensive for the quality, the ambiente was great, and the staff was super friendly and accommodating! would definitely come back to another trip to florence! [read more](#). The restaurant is accessible and can therefore also be used with a wheelchair or physiological disabilities, Depending on the weather conditions, you can also sit outside and eat and drink. WiFi is available without additional charges. What

[Rosita Messina](#) doesn't like about Pint of View:

Three of us headed over for drinks and dinner on a Saturday night (we had a reservation but the place wasn't full, it being November). A decent tap list of mainly local beers, including a saison and a gose. Service was friendly and with no problems with our lack of Italian. The cocktails we tried were very good. It's worth noting that there is no wine on the menu As far as the food goes the duck was fine, although it... [read more](#). [Tasty dishes of international cuisine](#) are freshly made for you at Pint of View, With the bite-sized, **Tapas**, you can't absolutely nothing wrong, particularly because there is something for all tastes. In addition, you can expect original Italian cuisine with tasty classics like pizza and pasta, You can take a break at the bar with a **cool beer** or other alcoholic and non-alcoholic drinks.

Pint of View Menu



Alcoholic Drinks

BEER

Mains

BEER-BRAISED PORK BELLY £14

Snacks

PORK SCRATCHINGS £3

Starters & Salads

SHRIMP

*Thai specialties**

PAD THAI

Aperitif

GLASS OF CHAMPAGNE

Alcoholic Beverages

BOTTLE OF CHAMPAGNE

Bottles of Wine & Water

BOTTLE OF WINE

Coffee

COFFEE £1

Supplements

PORK TERRINE £10

Nigiri, Gunkan

MARINATED MACKEREL £10

Starters

VEAL TARTARE £10

TRADITIONAL ENGLISH FISH AND CHIPS £15

Sweet Tooth

CREAMY DARK CHOCOLATE £7

ENGLISH CREAM TART £7

Something Light

TRADITIONAL CUMBERLAND SAUSAGE ROLL £9

PINT OF VIEW SALAD SPRING EDITION £9

CREAMED CELERY ROOT £8

A Little Bit of Substance

PINT OF VIEW SMASHBURGER £13

SUNCHOKE, ARTICHOKE, AND GARLIC RISOTTO £12

PINT OF VIEW CHICKEN BREAST £15

Restaurant Category

GASTROPUB

COCKTAIL

ITALIAN

Drinks

BOTTLE OF WATER £2

HALF A BOTTLE OF WATER

GLASS OF WINE

DRINKS

Pint of View Menu



Bar Snacks

TRADITIONAL TRIPLE-COOKED ENGLISH CHIPS	£4
KALE AND PARMESAN CROQUETTES	£5
CHARCOAL BRUSCHETTA WITH PEAS AND BACON	£5
ZUCCHINI TARTLETS	£6

Dishes are prepared with

CELERY
SHRIMP
DUCK
VEGETABLES

Pint of View Menu



Pint of View

Borgo Tegolaio 17r 50125,
Florence, United Kingdom

Made with menulist.menu

Opening Hours:

Tuesday 18:00-19:30 19:30-00:00

Wednesday 18:00-19:30 19:30-00:00

Thursday 18:00-19:30 19:30-00:00

19:30-01:00

Friday 18:00-19:30 19:30-00:00 19:30-

01:00

Saturday 18:00-19:30 19:30-00:00

19:30-01:00

Sunday 18:00-19:30 19:30-00:00

