

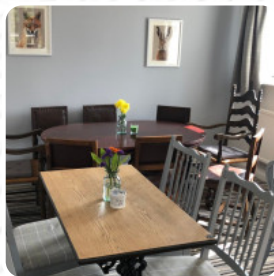


## ***The Ship Inn Menu***

<https://menulist.menu>

Saul, Stroud, United Kingdom

(+44)1452740260,(+44)1452764050 - <http://www.theshipinnframilode.uk>



On this webpage, you can find the *complete [menu](#)* of *The Ship Inn* from Stroud. Currently, there are **37** dishes and drinks available. For changing offers, please contact the owner of the restaurant directly. You can also contact them through their website. What [User](#) likes about The Ship Inn:

Impromptu visit for pie night, a good decision. Staff friendly and attentive as always. Food was great, I had a special of Prawn Twizzle which was new and really tasty. Two of the group had pie which went down a treat. One had the pork belly OMG it looked good! I has a wagyu burger on the specials .... so nice. Room for pudding and a summer berry at on mess and another had a banoffee waffle. Washed down with a good s... [read more](#). You can use the WiFi of the establishment free of charge, And into the accessible spaces also come clientele with wheelchairs or physical disabilities. If the weather conditions are right, you can also be served outside. What

[User](#) doesn't like about The Ship Inn:

We visited The Ship Inn with family for a birthday Sunday lunch. The location and setting was lovely. A few ordered starters which looked and apparently tasted great. However we waited a long time to then have our mains, which I believe was due to a busy service that day. The roasts were divine, although disappointing that the mains were price at £16.95 each despite online pricing stating £14.50 which we felt was a l... [read more](#). The Ship Inn from Stroud is a suitable bar to a cocktail after work, and sit with friends or alone, Don't miss the chance to try the crispy and crunchy pizza, prepared straight out from the oven in an traditional way. Not to be left out is the extensive selection of **coffee and tea specialties** in this restaurant, Particularly fans of the British cuisine are excited about the large diversity of traditional meals and love the typical English cuisine.

# *The Ship Inn Menu*

## *Non alcoholic drinks*

WATER

## *Alcoholic Drinks*

BEER

## *Appetizers*

NUGGETS

## *10 most popular*

BAGUETTE

## *Main courses*

CALAMARI

## *Vegetarian*

CAULIFLOWER

## *Extras*

BRIE

## *Starters & Salads*

POTATOE CHIPS

## *Chicken*

CHICKEN NUGGETS

## *Main Course*

PORK BELLY

## *Yaki-Grill Menu*

PRAWN

## *Drinks*

DRINKS

## *Biscuits and Cookies*

CHEESECAKE

## *Condiments and Sauces*

PRAWNS

## *Plates Brunch*

WAFFLE

## *Fish dishes*

FISH AND CHIPS

FISH AND CHIPS

## *Coffee*

CAPPUCCINO

COFFEE

## *Restaurant Category*



DESSERT

VEGETARIAN

GLUTEN FREE

VEGAN

## *Dishes are prepared with*

CRANBERRY

CHEESE

PORK MEAT

FETA

CHOCOLATE



# *The Ship Inn Menu*

CHICKEN

*These types of dishes are  
being served*

SIRLOIN STEAK

BURGER



FISH

DESSERTS

STEAK

LAMB

PASTA

SALAD



# *The Ship Inn Menu*



## *The Ship Inn*

Saul, Stroud, United Kingdom

### **Opening Hours:**

Sunday 12:00-23:00

Tuesday 17:00-23:00

Wednesday 12:00-23:00

Thursday 12:00-23:00

Friday 12:00-23:00

Saturday 12:00-23:00

Made with [menulist.menu](https://menulist.menu)

 gallery image

