

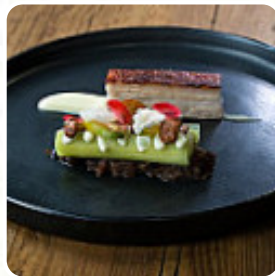


Rathfinny Tasting Room Menu

<https://menulist.menu>

Rathfinny Wine Estate, Wealden, United Kingdom

(+44)1323870022 - <https://rathfinnyestate.com/tasting-room/>



On this webpage, you can find the **complete [menu](#) of Rathfinny Tasting Room** from Wealden. Currently, there are **16** courses and drinks available. For seasonal or weekly deals, please contact the restaurant owner directly.

You can also contact them through their website. What [User](#) likes about Rathfinny Tasting Room:

my son and his wife, who visited the country, wanted to eat in this restaurant. we had the pleasure to visit a beautiful sunny day. the view from the restaurant was stunning the restaurant level on tasteful wise. the tasting menu was very well accompanied...with estate wines. on a head, including wine, the price was the same as we paid for a similar meal in a Michelin star restaurant, but was up to par. the service w... [read more](#). What [User](#)

doesn't like about Rathfinny Tasting Room:

Mother's Day lunch after year lock down...first outing...service arrogant and unfriendly...food my mother could cook better...looking forward to her Guinea Foul roast tomorrow.....never again to frequent [read more](#). In nice weather you can even have something in the outdoor area, And into the accessible rooms also come visitors with wheelchairs or physiological limitations. In the Rathfinny Tasting Room from Wealden you can enjoy dishes as they are common in Europe, Particularly fans of the British cuisine are excited about the large selection of traditional meals and love the typical English cuisine. Of course, we must not forget the comprehensive selection of coffee and tea specialties in this restaurant, You can also unwind at the bar with a *cool beer* or other alcoholic and non-alcoholic drinks.

Rathfinny Tasting Room Menu



Main courses

CRAB

Dessert

LEMON TART

Coffee

COFFEE

Condiments and Sauces

PRAWNS

Restaurant Category

GLUTEN FREE

Non alcoholic drinks

LEMON

WATER

These types of dishes are being served

BREAD

LAMB

FISH

Dishes are prepared with

CHICKEN

CHOCOLATE

BEEF

POTATOES

CARROTS

Rathfinny Tasting Room Menu



Rathfinny Tasting Room

Rathfinny Wine Estate, Wealden,
United Kingdom

Opening Hours:

Monday 10:00 -17:00
Tuesday 10:00 -17:00
Wednesday 10:00 -17:00
Thursday 10:00 -17:00
Friday 10:00 -17:00
Saturday 10:00 -17:00
Sunday 10:00 -17:00

Made with menulist.menu

