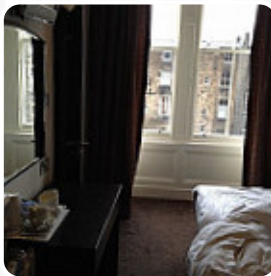


West End Menu

<https://menulist.menu>

35 Palmerston Place, Edinburgh, City of, United Kingdom
(+44)1312253656 - <https://www.thewestendhotel.co.uk/>



[The Card](#) of [West End from Edinburgh, City of](#) contains about 38 different dishes and drinks. On average, you pay for a dish / drink about £5. What [User](#) likes about West End: we were not really here, but came out of the next door for a drink and it was great. they played great songs while we had a few beers and watched the end of the foot. well maintained atmosphere, banging melodies and friendly staff. I would probably... come and stay here if I came back to edinburgh [read more](#). In nice weather you can even eat in the outdoor area. What [User](#) doesn't like about West End: I waited for almost ten minutes to be served and it was not a busy time. The woman who served me was disinterested, rude and also got my bill incorrect!!! I was surprised that for such a decent looking hotel that the staff would be...so very impolite and poorly presented. I also over-heard a loud female staff member making crude remarks about one of her colleagues, which was clearly in ear shot to guests! Both myself... [read more](#). West End from Edinburgh, City of is a good place for a bar to **have a beer after work** and be able to sit with friends or alone, Lovers of the English cuisine are impressed by the extensive diversity of traditional menus and enjoy the taste of England. Typically, the **burgers of this establishment** are served as highlights along with filling side dishes like french fries, leaf and cabbage salads or wedges, Also, the drinks menu at this place is exceptional and offers a significant and varied variety of both local and international beers, which are definitely worth a try.

West End Menu



Alcoholic Drinks

BEER

Appetizers

GARLIC BREAD £3

Soups

SOUP OF THE DAY £3

Burgers

CRISPY CHICKEN BURGER

Fish dishes

FISH AND CHIPS £12

Starters & Salads

FRIES

Breakfast

PORRIDGE £2

Mexican dishes

CHILLI

Saucen, Chutneys & Extras

GRAVY

Classics

GRILLED BEEF BURGER

American Food

EGGS BENEDICT £7

Sandwich Board

TUNA AND CHEESE

Pub Favourites

CURRY OF THE DAY £11

Brunch Classics

BUTTIES £3

For the Little Ones

PASTA OF THE DAY £11

Jackets

EGG MAYO

Drinks

DRINKS

Cheesecakes and Desserts

LEMON MERINGUE CHEESECAKE £5

Ploughman's

CHEESE AND HAM

Salads

HOUSE SALAD £3

COLESLAW £2

Side dishes

FRIES £3

ONION RINGS £3

West End Menu



Main

FULL SCOTTISH BREAKFAST	£8
CONTINENTAL BREAKFAST	£5

These types of dishes are being served

BURGER
ROAST BEEF

Dessert

STICKY TOFFEE PUDDING	£5
VANILLA ICE CREAM	£4
SALTED CARAMEL CHOCOLATE FUDGE CAKE	£5

Ciabatta / Paninis / Wraps

BARBEQUE CHICKEN WITH COLESLAW AND MIXED LEAVES
BLT WITH SMOKED BACON
HOUMOUS AND CHIPOTLE WITH MIXED LEAVES

Dishes are prepared with

BUTTER
CHEESE
BROCCOLI
CARROTS
BEEF

West End Menu



West End

35 Palmerston Place, Edinburgh,
City of, United Kingdom

Opening Hours:

Monday 12:00-18:00
Tuesday 12:00-18:00
Wednesday 12:00-18:00
Thursday 12:00-18:00
Friday 12:00-18:00
Saturday 12:00-18:00
Sunday 12:00-18:00

Made with menulist.menu

 gallery image