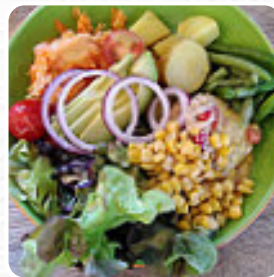
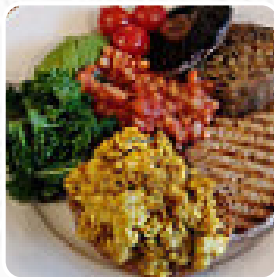




Beetroot Sauvage Menu

<https://menuweb.menu>

33-41 Ratcliffe Terrace, Edinburgh EH9 1SX, UK, United Kingdom
+447962963759, +447407247077 - <http://beetrootsauvage.co.uk/>



On this webpage, you can find the **complete [menu](https://menuweb.menu) of Beetroot Sauvage** from Edinburgh. Currently, there are **31** menus and drinks available. Nestled away from the bustling streets of Edinburgh, this hidden gem offers a delightful array of vegan dishes in a cozy atmosphere. Diners rave about the vibrant garden seating and spacious interior, perfect for leisurely meals. Though there may be occasional service delays, the quality of the food, such as the avocado toast and innovative desserts, makes it worth the wait. Patrons appreciate the generous portion sizes and reasonable prices, making it ideal for families and casual visitors alike. The charming ambiance, paired with friendly staff and a diverse menu, solidifies its place as a must-visit for food lovers.

Beetroot Sauvage Menu



Main Courses

NACHOS

Sandwiches

PASTRAMI SANDWICH

Dessert

WAFFLE

Mexican Dishes

CHILLI SAUCE

American Food

MAC AND CHEESE

Bread

GARLIC BREAD

Hot Drink

HOT CHOCOLATE

Coffee

ICED LATTE

French

CROISSANT

Restaurant Category

VEGAN

Salads

SIDE SALAD

CAESAR SALAD

Toast

AVOCADO TOAST

TOAST

Hot Drinks

COFFEE

TEA

Ingredients Used

CARAMEL

AVOCADO

TOFU

TUNA

CHOCOLATE

CHEESE

GARLIC

These Types Of Dishes Are Being Served



SANDWICH

BREAD

SALAD

SOUP

DESSERTS

PASTA

TOSTADAS

PANINI

Beetroot Sauvage Menu



Beetroot Sauvage

33-41 Ratcliffe Terrace,
Edinburgh EH9 1SX, UK, United
Kingdom

Opening Hours:
Wednesday 10:00 -17:00
Thursday 10:00 -15:00
Friday 10:00 -15:00
Saturday 11:00 -16:00
Sunday 11:00 -16:00

Made with menuweb.menu

