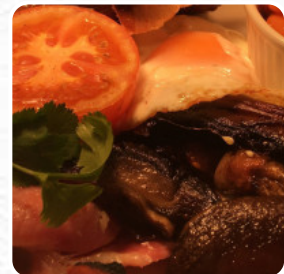
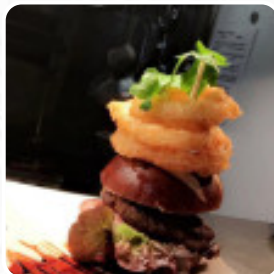




Wheatsheaf Menu

<https://menulist.menu>
Oulton Road, Stafford, United Kingdom
+441785817580 - <http://www.thewheatsheafstone.co.uk/>



On this homepage, you can find the complete menu of Wheatsheaf from Stafford. Currently, there are **15** dishes and drinks available. For **changing offers**, please contact the owner of the restaurant directly. You can also contact them through their website. What [Ros E](#) likes about Wheatsheaf:

Visited for our anniversary, was surprised to see it the quietest I ever have in my dozen or so visits. One word. Delicious. A real gem of a place. Their black pudding starter is a must, as are many other dishes, though to be fair. The hosts ate friendly and happy to chat through dishes. It is our 'go to ' place now, as we 've never been disappointed. Just a tip, when busy, parking can be a bit tight, so car share if... [read more](#). You can use the WiFi of the restaurant free of charge, Depending on the weather, you can also sit outside and be served. The premises on site are accessible, and therefore no problem for customers with wheelchairs or physiological disabilities. What [Eden Morgan](#) doesn't like about Wheatsheaf:

Very average food. But mainly just disappointed to see staff without face coverings. Won't visit again unless this changes. Staff friendly but it's just not enough at the moment. Sorry. [read more](#). At Wheatsheaf from Stafford, there are *delicious sandwiches, small salads and other snacks* for quick hunger in between, as well as hot and cold drinks, here they serve a appetizing brunch in the morning. Furthermore, there are many typically British menus on the card that make the English heart beat faster, With the bite-sized, Tapas, you can't absolutely nothing wrong, particularly because there is something for every palate.

Wheatsheaf Menu

Non alcoholic drinks

LEMON

Alcoholic Drinks

PERONI

Starters & Salads

POTATOE CHIPS

Beef

RUMP

Saucen, Chutneys & Extras

GRAVY

Mexikanische Hauptgerichte

FAJITAS

Cereals

STARTER

Condiments and Sauces

MUSHROOM

*These types of dishes are
being served*

LAMB

PANINI

PORK CHOP

Dishes are prepared with



EGG

CRUDE

TOMATE

PORK MEAT



Wheatsheaf Menu



Wheatsheaf

Oulton Road, Stafford, United Kingdom

Opening Hours:

Tuesday 12:00-14:30
Wednesday 10:00-14:30
Thursday 10:00-14:30
Friday 10:00-14:30
Saturday 10:00-23:00
Sunday 10:00-18:00

Made with menulist.menu

 gallery image

