

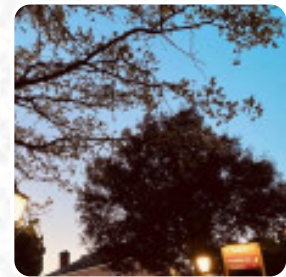


Starting Gate Menu

<https://menulist.menu>

Holmer Road, Herefordshire, County of, United Kingdom

+441432274853 - https://www.beefeater.co.uk/en-gb/locations/herefordshire/starting-gate?cid=yext_40017385



On this homepage, you can find the complete menu of Starting Gate from Herefordshire, County of. Currently, there are 15 menus and drinks available. For **changing offers**, please contact the owner of the restaurant directly. You can also contact them through their website. What [Lionel P](#) likes about Starting Gate: Four of us went for dinner celebrating a Birthday, the staff were very welcoming on arrival, we had two sirloin one T bone and mixed grill, All meals were cooked to perfection and Joe who served us couldn't have been more helpful. The last few visits to the beefeater have been excellent [read more](#). The rooms on site are wheelchair accessible and can also be used with a wheelchair or physical disabilities, Depending on the weather conditions, you can also sit outside and have something. WiFi is available without additional charges. What [Mick D](#) doesn't like about Starting Gate: Food was good when we eventually got it. Service was slap dash, we waited for 5 minutes to be seated, we did take a while to decide what we wanted but it then took 35+ minutes to receive our food. This would be acceptable at a busy time but there were only 5 other tables with people and 3 of them were either eating or finishing. [read more](#). A roundtrip through Great Britain without getting on a plane is absolutely possible when it comes to culinary delights: Starting Gate in Herefordshire, County of traditionally shines for example with [Fish and Chips](#), mashed potatoes or roast with Yorkshire Pudding and for dessert a *fine Trifle*, there are also delicious [vegetarian](#) meals on the menu. In case you want to have breakfast, a **hearty brunch** is offered to you, You can also unwind at the bar with a freshly tapped beer or other alcoholic and non-alcoholic drinks.

Starting Gate Menu



Main courses

RIBS

Meat

STEAKHOUSE

Carni di Manzo - vom Rind

MIXED GRILL

Drinks

DRINKS

Pizza Al Forno 12"

BEEFEATER

Restaurant Category

BAR

Dishes are prepared with

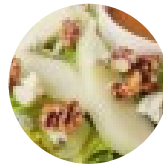


PESTO

SALMON

BEEF

These types of dishes are being served



SALAD

FISH

PASTA

BURGER

LAMB

STEAK

Starting Gate Menu



Starting Gate

Holmer Road, Herefordshire,
County of, United Kingdom

Opening Hours:

Sunday 07:00-22:30
Monday 06:30-23:00
Tuesday 06:30-23:00
Wednesday 06:30-23:00
Thursday 06:30-23:00
Friday 06:30-23:00
Saturday 07:00-23:00

Made with menulist.menu

