

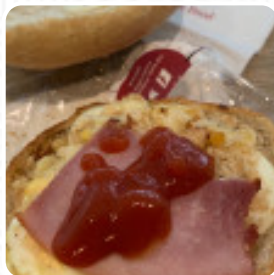
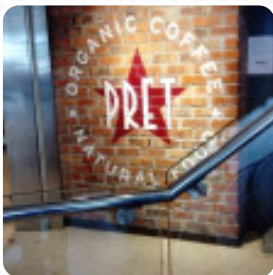


Pret A Manger Menu

<https://menuweb.menu>

The Lozenge GO1A, Lambeth, United Kingdom

+442076339233 - <https://locations.pret.co.uk/london/unit-go1a>



On this homepage, you can find the **complete [menu](#) of Pret A Manger** from Lambeth. Currently, there are **24** meals and drinks up for grabs. Pret is a convenient spot to grab a quick meal with delicious sandwiches, wraps, and salads. While some customers have complained about inconsistent coffee quality and disorganized service, others have praised the friendly staff and delicious food options. The central London location at Waterloo station makes it easily accessible for travelers. Overall, the restaurant offers a comfortable and clean environment, with limited seating and the occasional noisy fridge or loud music. Despite some shortcomings, many customers still enjoy the affordable and tasty meals at Pret.

Pret A Manger Menu



Salads

ROCKET SALAD

Extras

BOILED EGG

Breakfast

PORRIDGE

Drinks

DRINKS

Hot Drinks

COFFEE

Bread

BAGUETTE

Egg Dishes

OMELETTE

Coffee

ESPRESSO

CAPPUCCINO

Dessert

MUFFINS

BLUEBERRY PIE

BLUEBERRY MUFFIN

These Types Of Dishes Are Being Served

SALAD

BREAD

CHICKEN

SOUP

Ingredients Used



TUNA

CREAM CHEESE

CHEESE

CARAMEL

SAUSAGE

HAM

EGG

BACON

Pret A Manger

The Lozenge GO1A, Lambeth,
United Kingdom

Opening Hours:

Sunday 06:30-22:30

Monday 05:30-23:00

Tuesday 05:30-23:00

Wednesday 05:30-23:00

Thursday 05:30-23:00

Friday 05:30-23:30

Saturday 05:30-23:00

Made with menuweb.menu

