

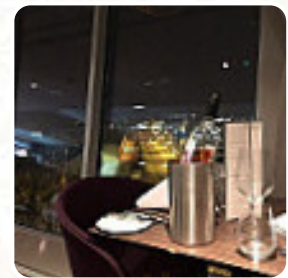
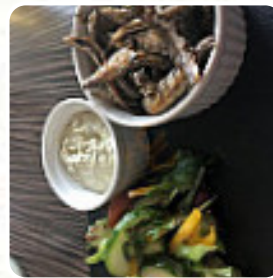


1935 Roof Top Menu

<https://menulist.menu>

77 Eastwoodbury Crescent, Southend-on-Sea, United Kingdom

+441702543001



A comprehensive [menu](#) of 1935 Roof Top from Southend-on-Sea covering all 20 menus and drinks can be found here on the menu. For **changing offers**, please get in touch via phone or use the contact details provided on the website. At 1935 Roof Top from Southend-on-Sea you have the opportunity to savor delicious vegetarian menus, in which no trace of animal meat or fish was processed, the restaurant offers also **dishes from the European environment**. When you're not so hungry, you can just treat yourself to one of the delicious *sandwiches*, a healthy salad or another snack, The customers of the restaurant are also thrilled with the extensive variety of differing coffee and tea specialities that the establishment offers.

1935 Roof Top Menu



Fish dishes

FISH

Starters & Salads

RISOTTO

Appetizer

TEMPURA

Dessert

LEMON TART

Drinks

DRINKS

Biscuits and Cookies

CHEESECAKE

Condiments and Sauces

PRAWNS

Ingredients Used

BEEF

PESTO

DUCK

PORK MEAT

SALMON

These types of dishes are being served



FISH

BURGER

SALAD

LAMB

TOSTADAS

PANINI

PASTA

ROAST BEEF

1935 Roof Top Menu



1935 Roof Top

77 Eastwoodbury Crescent,
Southend-on-Sea, United
Kingdom

Made with menulist.menu

Opening Hours:

Monday 12:00 -14:30 18:00 -22:00
Tuesday 12:00 -14:30 18:00 -22:00
Wednesday 12:00 -14:30 18:00
-22:00
Thursday 12:00 -14:30 18:00 -22:00
Friday 12:00 -14:30 18:30 -22:00
Saturday 12:00 -14:30 18:30 -22:00
Sunday 12:00 -20:45

