



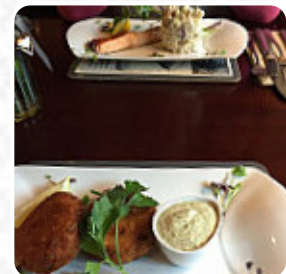
The Greyhound Inn Menu

<https://menulist.menu>

Bromfield, Carlisle, United Kingdom

+441228539766,+441697361312,+441228561592,+4412285 -

<https://www.auctioneercarlisle.co.uk/>



A **comprehensive [menu](#) of The Greyhound Inn** from Carlisle covering all **5** courses and drinks can be found here on the food list. For changing offers, please get in touch via phone or use the contact details provided on the website. What [User](#) likes about The Greyhound Inn:

Very nice meal, drinks were lovely, service was spot on and I was a great atmosphere. The only problem was the smack head outside, clearly high on cocaine and claimed he could take me in a fight I believe this rather odd individual lives there and should be removed from the premises immediately. [read more](#). The premises in the restaurant are wheelchair accessible and can also be used with a wheelchair or physical disabilities, Depending on the weather, you can also sit outside and eat. The Greyhound Inn from Carlisle is a good place for a bar to a drink after work and be able to hang out with friends, Particularly fans of the English cuisine are excited about the extensive variety of traditional dishes and love the typical English cuisine. It goes without saying that a suitable drink completes a meal; therefore this gastropub serves a generous diversity of delicious and local alcoholic options, be it beer or wine, In addition, the *sweet desserts* of the establishment shine not only in the eyes of the little guests.

The Greyhound Inn Menu



Side dishes

SCAMPI

Starters & Salads

POTATOE CHIPS

Saucen, Chutneys & Extras

GRAVY

Cereals

STARTING

Drinks

DRINKS

Restaurant Category

DESSERT

***These types of dishes are
being served***

STEAK

DESSERTS

ROAST BEEF

TURKEY

Ingredients Used

POTATOES

CARROTS

PEAS

BEEF

MEAT

The Greyhound Inn Menu



The Greyhound Inn

Bromfield, Carlisle, United Kingdom

Opening Hours:
Sunday 18:00-12:00
Thursday 18:00-12:00
Friday 18:00-12:00
Saturday 18:00-12:00

Made with menulist.menu

