

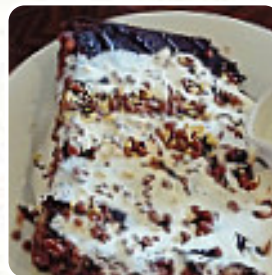
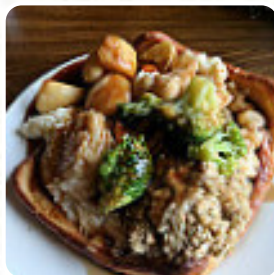


## Wearside Farm, Dining Carvery Menu

<https://menuweb.menu>

Turbine Business Park Washington Tyne Wear 3 Turbine Way, Sunderland I-SR5 3QY,  
United Kingdom

+441914171471 - <http://www.st-hallo.com/sin.html>



Here you will find the [menu](#) of **Wearside Farm, Dining Carvery** in Sunderland. At the moment, there are **15** dishes and drinks on the menu. Nestled in a vibrant atmosphere, this restaurant impresses with its dedicated staff and family-friendly offerings. Guests consistently praise the warm hospitality, particularly noting the attentiveness and friendliness of the team. Despite occasional menu limitations, quick service and fresh, delicious meals, including a generous carvery, enhance the dining experience. The establishment also caters superbly to families, providing a well-maintained indoor play area for younger children and outdoor options for older kids. Diners enjoy the relaxing ambiance, making it an excellent choice for both parents and children. With its delectable dishes and welcoming environment, repeat visits are a certainty.

# Wearside Farm, Dining Carvery Menu



## Entrées

ONION RINGS

## Fish Dishes

FISH & CHIPS

## Drinks

DRINKS

## Starters & Salads

POTATO CHIPS

## Fish

SEA BASS

## Dessert

CHEESECAKE

## Indian

CHICKEN CURRY

## Restaurant Category

BAR

## Ingredients Used



SALMON

BEEF

ONION

## These Types Of Dishes Are Being Served

TOSTADAS

SALAD

BURGER

FISH

---

# Wearside Farm, Dining Carvery

Turbine Business Park  
Washington Tyne Wear 3 Turbine  
Way, Sunderland I-SR5 3QY,  
United Kingdom

### Opening Hours:

Friday 08:00-23:00  
Saturday 08:00-23:00  
Sunday 08:00-22:00  
Monday 08:00-22:00  
Tuesday 08:00-22:00  
Wednesday 08:00-22:00  
Thursday 08:00-22:00

Made with [menuweb.menu](https://menuweb.menu)

