



## ***Pin-etch Menu***

<https://menulist.menu>

1-2 Waxhouse Gate High Street, St Albans I-AL3 4EW, United Kingdom

+441727854843



A comprehensive menu of Pin-etch from St Albans covering all **15** dishes and drinks can be found here on the menu. For *seasonal or weekly deals*, please get in touch via phone or use the contact details provided on the website. What [User](#) likes about Pin-etch:

it was always brilliant here with beautiful customer service. we've been on our way for years. they will make veggie alternatives when they are asked what should be advertised because this is not offered anywhere. [read more](#). A visit to Pin-etch becomes even more rewarding due to the large range of coffee and tea specialties, on the menu there are also a lot of Asian dishes. The **Asian fusion cuisine** is likewise an important part of Pin-etch. Anyone who finds the usual and generally known menus too ordinary can here approach with a willingness to experiment and try some unexpected combination of ingredients consume, fine [vegetarian](#) dishes are also in the menu available.

# *Pin-petch Menu*

## *Main Dishes*

GREEN CURRY

## *Thai specialties\**

PAD THAI

## *Hot drinks*

TEA

## *Drinks*

DRINKS

## *Ingredients Used*

DUCK

## *Non alcoholic drinks*

WATER

ICED TEA

## *Condiments and Sauces*

PRAWNS

CURRY

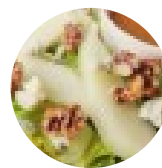
## *Beverages*

THAI TEA

WATER BOTTLE

THAI ICED TEA

## *These types of dishes are being served*



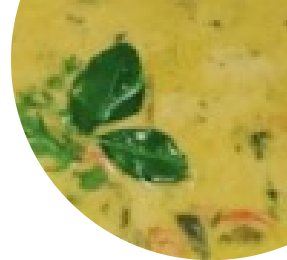
SALAD

DESSERTS

FISH



# *Pin-petch Menu*



## *Pin-petch*

1-2 Waxhouse Gate High Street,  
St Albans I-AL3 4EW, United  
Kingdom

### **Opening Hours:**

Monday 11:00-23:00  
Tuesday 11:00-23:00  
Wednesday 11:00-23:00  
Thursday 11:00-23:00  
Friday 11:00-23:00  
Saturday 11:00-23:00  
Sunday 11:00-23:00

Made with [menulist.menu](https://menulist.menu)

