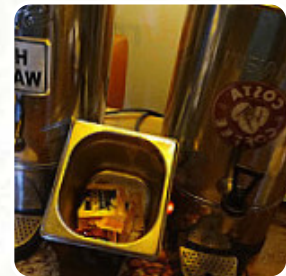
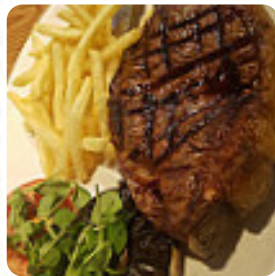
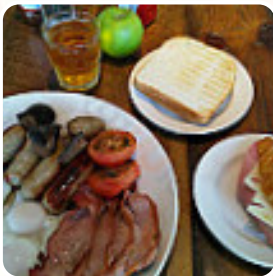


Beefeater Woolpack Menu

<https://menulist.menu>

Maidstone Road, Ashford I-TN26 1AP, United Kingdom

+441233713000 - <http://www.beefeater.co.uk>



A comprehensive [menu](#) of Beefeater Woolpack from Ashford covering all 15 dishes and drinks can be found here on the card. For **changing offers**, please get in touch via phone or use the contact details provided on the website. What [User](#) likes about Beefeater Woolpack:

we celebrated my birthday on 6 May. served by the beautiful sam, the very understanding helpful on the gluten-free options, as my man is celiac. we had a nice meal service was excellent. for several years the woolpack can rely on gluten-free meals without worrying. of course recommend. [read more](#). You can use the WiFi of the place free of charge, And into the accessible rooms also come customers with wheelchairs or physiological disabilities.

If the weather are right, you can also be served outside. What [Salah Rashid](#) doesn't like about Beefeater Woolpack:

As a family of three we dinned in for dinner. The manager and waitress were polite and professional. Worth trying the beef steaks. Enjoyed the time there. The only concern we had was the tables were STICKY! Food: 4 Service:

4 Atmosphere: 4 [read more](#). A roundtrip through Great Britain without getting on a plane is effortlessly possible when it comes to culinary delights: Beefeater Woolpack in Ashford traditionally shines for instance with Fish and

Chips, mashed potatoes or roast with Yorkshire Pudding and as dessert a fine Trifle, Inthemorning a [hearty brunch](#) is offered here. You can also look forward to *delicious* [vegetarian cuisine](#), You can take a break at the bar with a cool beer or other alcoholic and non-alcoholic drinks.

Beefeater Woolpack Menu



Alcoholic Drinks

BEER

Main courses

RIBS

Starters & Salads

POTATOE CHIPS

Meat

STEAKHOUSE

Carni di Manzo - vom Rind

MIXED GRILL

Pizza Al Forno 12"

BEEFEATER

Plates Brunch

WAFFLE

Restaurant Category

BAR

DESSERT

Ingredients Used

SALMON

BEEF

These types of dishes are being served

FISH

SALAD

BURGER

LAMB

Beefeater Woolpack Menu



Beefeater Woolpack

Maidstone Road, Ashford I-TN26
1AP, United Kingdom

Opening Hours:

Monday 06:30-23:00
Tuesday 06:30-23:00
Wednesday 06:30-23:00
Thursday 06:30-23:00
Friday 06:30-23:00
Saturday 07:00-23:00
Sunday 07:00-22:30

Made with menulist.menu

