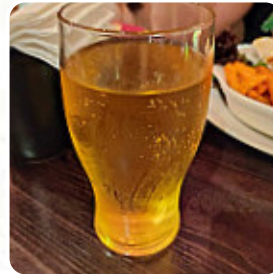
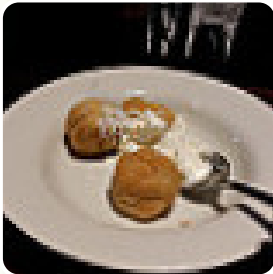




## ***The Snipe Menu***

<https://menulist.menu>

Alfreton Road, Sutton In Ashfield I-NG17 1JE, United Kingdom, Sutton in Ashfield  
+441623443604 - [https://www.hungryhorse.co.uk/pubs/nottinghamshire/snipe?  
utm\\_source=g\\_places&utm\\_medium=locations&utm\\_campaign=HH\\_pubpage](https://www.hungryhorse.co.uk/pubs/nottinghamshire/snipe?utm_source=g_places&utm_medium=locations&utm_campaign=HH_pubpage)



Here you can find the [menu](#) of *The Snipe* in Sutton in Ashfield. At the moment, there are 15 menus and drinks on the menu. You can inquire about changing offers via phone. What [User](#) likes about The Snipe: staff very friendly and helpful be amazing food spot in any case going back is only partial that the building looks a bit tired and needs some fir inwards and outside, but that said ideal from a fast beer a lunch good access to the main roads and a lot large parking space 9/10 [read more](#). What [3Perrie M \(2 1 year ago on Google](#) doesn't like about The Snipe:

Me and my partner both had the mix grill, the chips, egg and peas were delicious. However the steak was well over done, we asked for medium rare. The sausages were old and you couldn't cut through them. No onion rings at all, pineapple, gammon were black. But the worst was the chicken, it looked like it was covered in a jelly slime. I ate what I could, showed a member of staff who gave us free drinks as an apology an... [read more](#). A journey through Great Britain without getting on a plane is easily possible when it comes to culinary delights: The Snipe in Sutton in Ashfield traditionally shines for example with **Fish and Chips**, mashed potatoes or roast with Yorkshire Pudding and for dessert a **sweet Trifle**, tasty [vegetarian](#) recipes are also in the menu available. In case you want to have breakfast, a hearty brunch is offered to you, Moreover, the menu of this gastropub offers a good and especially large variety of beers from the region and the world that are definitely worth a try.

# ***The Snipe Menu***

## ***Non alcoholic drinks***

TONIC

## ***Alcoholic Drinks***

BEER

## ***Fish dishes***

FISH

## ***Saucen, Chutneys & Extras***

GRAVY

## ***Carni di Manzo - vom Rind***

MIXED GRILL

## ***Drinks***

DRINKS

## ***Biscuits and Cookies***

CHEESECAKE

## ***Condiments and Sauces***

CURRY

## ***Restaurant Category***

BAR

## ***Ingredients Used***

SALMON

BEEF

## ***These types of dishes are being served***

SALAD

FISH

BURGER

STEAK



# *The Snipe Menu*



## *The Snipe*

Alfreton Road, Sutton In Ashfield  
I-NG17 1JE, United Kingdom,  
Sutton in Ashfield

### **Opening Hours:**

Monday 10:00 -23:00  
Tuesday 10:00 -23:00  
Wednesday 10:00 -23:00  
Thursday 10:00 -23:00  
Friday 10:00 -00:00  
Saturday 10:00 -00:00  
Sunday 10:00 -23:00

Made with [menulist.menu](https://menulist.menu)

