

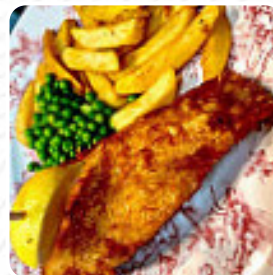


## The Plough On The Green Menu

<https://menuweb.menu>

The Folly, West Berkshire, United Kingdom

+44163545207 - <https://www.ploughonthegreenpub.co.uk/>



Here you can find the [menu](#) of **The Plough On The Green** in West Berkshire. At the moment, there are **15** courses and drinks on the menu. The Plough on the Green in Newbury is a welcoming, family-friendly pub serving a wide range of traditional pub dishes. From classic Hand-Battered Cod Chips to our signature Steak Marston's Ale Pie, our menu has something for everyone to enjoy. In addition to our delicious food, we offer a variety of cask ales, wines, spirits, and soft drinks. Our friendly staff are always ready to assist you and make you feel at home. Enjoy your meal in our lovely outside area or take a stroll on the green after a delicious dinner.

# The Plough On The Green Menu



## Entrées

PRAWN COCKTAIL

## Fish Dishes

FISH AND CHIPS

## Seafood

PRAWN

## Lamb

LAMB SHANK

## Sauces

GRAVY

## Ingredients Used

SAUSAGE

## Drinks

BEER

DRINKS

## Restaurant Category

DESSERT

VEGETARIAN

## These Types Of Dishes Are Being Served

CHICKEN

BURGER

TUNA STEAK

FISH

LAMB

---

# The Plough On The Green

The Folly, West Berkshire, United Kingdom

### Opening Hours:

Sunday 12:00-22:30

Monday 12:00-23:00

Tuesday 12:00-23:00

Wednesday 12:00-23:00

Thursday 12:00-23:00

Friday 12:00-00:00

Saturday 12:00-00:00

Made with [menuweb.menu](https://menuweb.menu)

