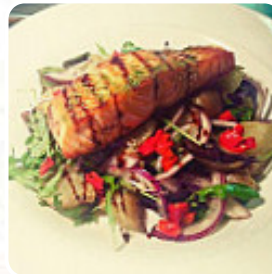




Bistro Down Royal Park Golf Course Menu

<https://menulist.menu>

6 Dunygarton Road, Lisburn, United Kingdom
+442892621339 - <http://www.barbistrodownroyal.com/>



A comprehensive menu of Bistro Down Royal Park Golf Course from Lisburn covering all 16 meals and drinks can be found here on the food list. For changing offers, please get in touch via phone or use the contact details provided on the website. What [Joan Mcghee](#) likes about Bistro Down Royal Park Golf Course: First time visit to Bar Bistro. Thought the Seafood Evening would be a good time to try as my good man loves his fish! Not being a big fan of seafood, Chef Will Crawford was very accomodating in changing my appitizer and starter and the husband benefited from the surf off my turf! Chowder, mussells, sea bass fillets, all excellent, breads/olive tapenade, garlic mushrooms, sirloin steak (cooked perfectly) and king pra... [read more](#). Various **fine seafood courses** are dished out by the Bistro Down Royal Park Golf Course from Lisburn, tasty vegetarian meals are also on the menu available. Of course, the right drink to accompany a meal is a must; for this purpose, this **gastropub** offers you a wide variety of scrumptious, regional alcoholic beverages like beer or wine, Particularly fans of the British cuisine are excited about the extensive selection of traditional menus and love the typical English cuisine.

Bistro Down Royal Park Golf Course Menu



Appetizers

GARLIC MUSHROOMS

Mains

SIRLOIN

Main Course

SEA BASS

Cereals

STARTING

Condiments and Sauces

PRAWNS

Restaurant Category

BAR

Ingredients Used



GARLIC

MUSHROOMS

SEAFOOD

KING PRAWNS

***These types of dishes are
being served***

SALAD

BREAD

FISH

STEAK

SIRLOIN STEAK

APPETIZER

Bistro Down Royal Park Golf Course Menu



Bistro Down Royal Park Golf Course

6 Dunygarton Road, Lisburn,
United Kingdom

Opening Hours:
Wednesday 11:00-20:00
Thursday 11:00-20:00
Friday 11:00-20:00
Saturday 11:00-20:00
Sunday 11:00-20:00

Made with menulist.menu

