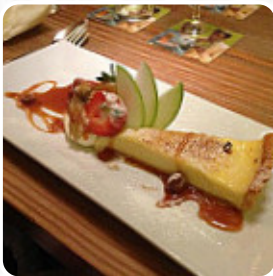




## *The White Swan Menu*

<https://menulist.menu>  
East End, Ryedale, United Kingdom  
+441439788239 - <http://thewhiteswan-ampleforth.co.uk>



On this website, you can find the **complete menu** of **The White Swan** from Ryedale. Currently, there are 16 menus and drinks up for grabs. For changing offers, please contact the restaurant owner directly. You can also contact them through their website. What [AndoKelso](#) likes about The White Swan:

The service is excellent. Food choice and tastes very good. The range of proper ales good, and all done with a smile by the staff. Dogs also welcome and great views at the back. [read more](#). The restaurant and its premises are wheelchair accessible and thus reachable with a wheelchair or physical disabilities, and there is free WLAN.

If the weather are right, you can also be served outside. What [Lynn B](#) doesn't like about The White Swan: We were directed to the ordinary bar, not the lounge bar as we just wanted drinks. What a contrast-the lounge bar was really well furnished and set out and had a warm, welcoming atmosphere. The bar to which we were directed was scruffy and unwelcoming-dirty bench seating and where we sat there was a hole in the fabric. This was a special day for us and we will not be back [read more](#). A roundtrip through Great Britain without getting on a plane is easily possible when it comes to culinary delights: The White Swan in Ryedale traditionally shines for example with **Fish and Chips**, mashed potatoes or roast with Yorkshire Pudding and for dessert a *delicious Trifle*, In addition, the drinks menu that is offered in this established eatery is impressive. It offers a diverse assortment of beers from the region and the whole world. If you want to have breakfast, a versatile brunch awaits you, You can also unwind at the bar with a freshly tapped beer or other alcoholic and non-alcoholic drinks.

# *The White Swan Menu*



## *Süße Desserts*

BROWNIE

## *Side dishes*

SCAMPI

## *Starters & Salads*

POTATOE CHIPS

## *Dessert*

STICKY TOFFEE PUDDING

## *Saucen, Chutneys & Extras*

GRAVY

## *Drinks*

DRINKS

## *Restaurant Category*

DESSERT

## *Non alcoholic drinks*

WATER

MINERAL WATER

## *Ingredients Used*

VEGETABLES

PORK MEAT

## *These types of dishes are being served*

FISH

LAMB

SALAD

BREAD

STEAK

# *The White Swan Menu*



## *The White Swan*

East End, Ryedale, United Kingdom

**Opening Hours:**

 gallery image

