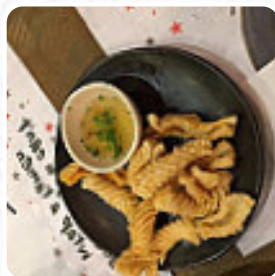




Wagamama Hammersmith The Old Fire Station Menu

<https://menulist.menu>

244 Shepherds Bush Road, Hammersmith and Fulham, United Kingdom
(+44)2087419814 - <https://www.wagamama.com/restaurants/london/hammersmith>



On this homepage, you can find the complete [menu](#) of Wagamama Hammersmith The Old Fire Station from Hammersmith and Fulham. Currently, there are 16 courses and drinks available. For **changing offers**, please contact the owner of the restaurant directly. You can also contact them through their website. What [User](#) likes about Wagamama Hammersmith The Old Fire Station:

Me and my wife ate here last week and it was the first time either of us had ever eaten in a Wagamama. We ordered the pulled pork gyoza (delicious), chicken yakitori (tasty, but very little chicken), katsu chicken curry (very nice but wish we went for the spicy option) and the Duck Donburi (also very nice and a good portion). The food came out pretty quickly and we are quite quick eaters, so we were in and out within... [read more](#). The diner and its rooms are wheelchair accessible and thus usable with a wheelchair or physical disabilities, Depending on the weather, you can also sit outside and eat. What [User](#) doesn't like about Wagamama Hammersmith The Old Fire Station:

Service slow so slow and trying to beckon staff- too late for dessert as had a concert to attend at the apollo. Starter bit soggy. Regretted rose lemonade far too strong. Beef rice bowl good Chicken yaki-soba not peppers raw too many bean sprouts. Don't do seafood so asked of prawns could be replaced by Mange tout or mushrooms. 3 whole slices of mushroom! Te restaurant wasn't busy we were eat at just after 5pm Food c... [read more](#). At Wagamama Hammersmith The Old Fire Station in Hammersmith and Fulham, a **delicious brunch** is served for breakfast, where you can have your fill enjoy thoroughly, Also, the drinks menu at this place is exceptional and offers a significant and varied variety of both local and international beers, which are definitely worth a try. A lot of freshly harvested vegetables, fish and meat is used in the *easily digestible Japanese cuisine* of Wagamama Hammersmith The Old Fire Station, At the bar, you can unwind with a freshly tapped beer or other alcoholic and non-alcoholic drinks.

Wagamama Hammersmith The Old Fire Sta



Indian

CHICKEN CURRY

Soft drinks

LEMONADE

Main Course

GYOZA

Main

PULLED PORK

Japanese specialties

YAKITORI

Cereals

STARTING

Condiments and Sauces

PRAWNS

MUSHROOM

CURRY

Ingredients Used

CHICKEN

SEAFOOD

MUSHROOMS

TRAVEL

BEEF

DUCK

PORK MEAT

Wagamama Hammersmith The Old Fire Sta



Wagamama Hammersmith The Old Fire Station

244 Shepherds Bush Road,
Hammersmith and Fulham,
United Kingdom

Opening Hours:

Sunday 11:00-22:00
Monday 11:00-22:00
Tuesday 11:00-22:00
Wednesday 11:00-22:00
Thursday 11:00-22:00
Friday 11:00-23:00
Saturday 11:00-23:00

Made with menulist.menu

 gallery image

