

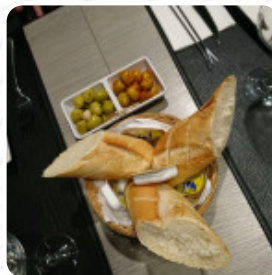


Lyly's Fondue Menu

<https://menulist.menu>

Rue Gretry 43, Brussel Centrum, Belgium

+3222177940 - <https://www.facebook.com/pages/category/Fondue-Restaurant/Lylys-Fondue-1506447432950697/>



On this homepage, you can find the complete menu of Lyly's Fondue from Brussel Centrum. Currently, there are 16 courses and drinks available. For **seasonal or weekly deals**, please contact the restaurant owner directly.

You can also contact them through their website. What [User](#) likes about Lyly's Fondue: very friendly welcome, the boss is a wine connoisseur, which is very appreciable. the burgundy fondue is of very good quality, and with the formula at will, we are pleased! We'll be back there. [read more](#). The restaurant and its rooms are wheelchair accessible and thus usable with a wheelchair or physical disabilities, Depending on the weather, you can also sit outside and eat. WiFi is available at no extra cost. For those who want to a beer after work and sit with friends or alone, Lyly's Fondue from Brussel Centrum is a good bar, You can also look forward to the typical scrumptious *French cuisine*. There are also tasty dishes available, typical for Europe, The guests of the establishment also consider the large selection of differing **coffee and tea specialities** that the establishment offers.

Lily's Fondue Menu



Appetizers

SPRING ROLLS

Starters & Salads

FRIES

Restaurant Category

HALAL

Desserts

DESSERT 1

DESSERT 2

DESSERT 3

MICHELIN Special

MAIN COURSE 1

MAIN COURSE 2

MAIN COURSE 3

Gebratene Nudeln mit gebackener Hühnerbrust

STARTER 1

STARTER 2

STARTER 3

Ingredients Used



MEAT

CHEESE

CHICKEN

BEEF

Lily's Fondue Menu



Lily's Fondue

Rue Gretry 43, Brussel Centrum,
Belgium

Opening Hours:

Tuesday 18:00-22:00

Wednesday 12:00-15:00 18:00-
22:30

Thursday 12:00-15:00 18:30-22:00

Friday 12:00-15:00 18:00-22:30

Saturday 12:00-15:00 18:00-22:30

Sunday 12:00-15:00 18:00-22:30

Made with menulist.menu

