

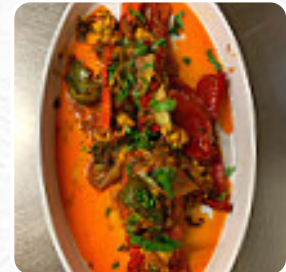
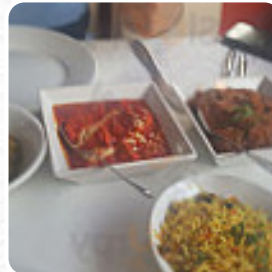


## ***British Raj Menu***

<https://menulist.menu>

25 High Street, Swale, United Kingdom

+441795599388,+441795422665 - <https://www.facebook.com/britishraj.sittingbourne/>



A complete [menu](#) of British Raj from Swale covering all 16 meals and drinks can be found here on the menu. For changing offers, please get in touch via phone or use the contact details provided on the website. What [User](#) likes about British Raj:

we received a warm welcome when we arrived and was served by a polite and attentive lady. eating was both fabulous and very generous portions. all washed out with a few Cobra lacing on the train. drinks, poppadome, appetizers and net for 2 with a bill under £50. excellent value for money and I would highly recommend [read more](#). When the weather conditions is nice you can also be served outside, And into the accessible spaces also come customers with wheelchairs or physiological disabilities. What [An R](#) doesn't like about British Raj: £11.60 for veg vindaloo and 1x peshawar nanny. Expensive and it wasn't nice. So won't be using there services again.says on the menu £7.95 for curry and £2.95 for pashwari Vegetarian options: No Meal type: Other Price per person: £10–20 Food: 2 Service: 1 Atmosphere: 3 [read more](#). At British Raj from Swale, different **tasty French menus** are served, In addition, the drinks menu that is offered in this established eatery is impressive. It offers a wide diversity of beers from the region and the whole world. Customers also value the use of traditional **Indian spices**, Besides, the inventive blend of different dishes with new and partially adventurous products is appreciated by the customers - a beautiful case of Asian Fusion.

# ***British Raj Menu***



## ***Alcoholic Drinks***

BEER

## ***10 most popular***

SHAKE

## ***Side dishes***

NAN

## ***Tazi Tarkari***

PANEER MASALA

## ***Yaki-Grill Menü***

PRAWN

## ***Cereals***

STARTING

## ***Drinks***

DRINKS

## ***Condiments and Sauces***

CURRY

## ***Restaurant Category***

VEGETARIAN

***These types of dishes are  
being served***

BREAD

## ***Indian***

MASALA

CHICKEN MADRAS

## ***Ingredients Used***

GARLIC

DUCK

CHICKEN

TRAVEL

# ***British Raj Menu***



## ***British Raj***

25 High Street, Swale, United Kingdom

### **Opening Hours:**

Tuesday 17:00-22:00  
Wednesday 17:00-22:00  
Thursday 17:00-22:00  
Friday 17:00-22:00  
Saturday 17:00-22:00  
Sunday 17:00-22:00

Made with [menulist.menu](https://menulist.menu)

 gallery image