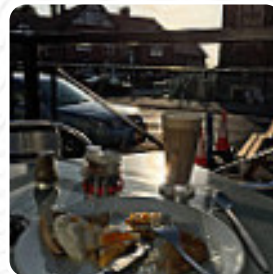




Willmore's 1938 Menu

<https://menulist.menu>

4 Washington Buildings Stanwell Road, The Vale of Glamorgan, United Kingdom
+442920709600 - <http://www.facebook.com/willmores1938>



A complete [menu](#) of Willmore's 1938 from The Vale of Glamorgan covering all 10 courses and drinks can be found here on the card. For **seasonal or weekly deals**, please get in touch via phone or use the contact details provided on the website. What [User](#) likes about Willmore's 1938:

it is with great sadness I have heard that this magnificent family café is closed on December 23rd 2021. as central perk coffee shop, it was the place where everyone knew them name. for those of them who have never visited this facility they have missed a contract, for those of us who are regular we can but shed a tear for this loss, but say thank you for all the great coffee we have drank over the years. I wish them... [read more](#). When the weather conditions is pleasant you can also be served outside, and there is complimentary WiFi. What [mrcoxexcel](#) doesn't like about Willmore's 1938:

The food was ok, but it took a long time to arrive and parts of it cold. It could do with a little more signage so customers don't stand at the counter waiting for non existent staff when you should know to pop next door to order your food. I wouldn't bother going there again. [read more](#). For quick hunger in between, Willmore's 1938 from The Vale of Glamorgan serves tasty sandwiches, healthy salads, and other treats, as well as hot and cold drinks, there are also *delectable* [vegetarian recipes](#) on the menu. If you decide to come for breakfast, a hearty brunch is ready for you, Particularly fans of the English cuisine are excited about the extensive selection of traditional dishes and love the typical English cuisine.

Willmore's 1938 Menu



Salads

COLESLAW

10 most popular

BAGUETTE

Fish dishes

FISH FINGER

Starters & Salads

FRIES

Lunch

CLUB SANDWICH

Coffee

COFFEE

Drinks

DRINKS

Ingredients Used

EGGS

MEAT

CARAMEL

These types of dishes are being served

FISH

SANDWICH

BREAD

PANINI

ICE CREAM

SALAD

Willmore's 1938 Menu



Willmore's 1938

4 Washington Buildings Stanwell
Road, The Vale of Glamorgan,
United Kingdom

Opening Hours:

Sunday 08:00-18:00
Monday 08:00-18:00
Tuesday 08:00-18:00
Wednesday 08:00-18:00
Thursday 08:00-18:00
Friday 08:00-18:00
Saturday 08:00-18:00

Made with menulist.menu

