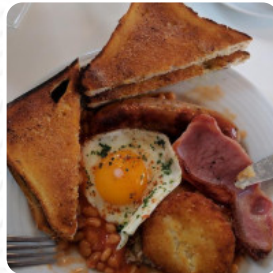




The Village Pantry Menu

<https://menulist.menu>
4 Hoole Lane, West Lancashire, United Kingdom
(+44)1704807890



A comprehensive [menu](#) of The Village Pantry from West Lancashire covering all **16** menus and drinks can be found here on the card. For *changing offers*, please get in touch via phone or use the contact details provided on the website. What [Sharon Graham](#) likes about The Village Pantry:

Nothing amiss here. Homemade pies, cakes, breakfasts and lunches. Will cook SW if requested. Their Eggs Benedict is delicious. Local produce available. Refreshments are made as requested. I only have a half shot, skinny Latte). And the staff are delightful. I JUST LOVE THIS PLACE!!!! [read more](#). For breakfast, a diverse brunch is offered at The Village Pantry in West Lancashire that you can sample as much as you like, Likewise, the visitors of the restaurant prefer the large variety of various **coffee and tea specialities** that the establishment provides.

The Village Pantry Menu



Alcoholic Drinks

BEER

Appetizers

EMPANADAS

Extras

GINGER

Beer

GINGER BEER

American Food

EGGS BENEDICT

Drinks

DRINKS

Biscuits and Cookies

CHEESECAKE

*These types of dishes are
being served*

SOUP

Sweets

CHOCOLATE CAKE

CHEESE CAKE

Coffee

COFFEE

LATTE

Ingredients Used

CHOCOLATE

CHEESE

EGGS

COCONUT

The Village Pantry Menu



The Village Pantry

4 Hoole Lane, West Lancashire,
United Kingdom

Opening Hours:

 gallery image