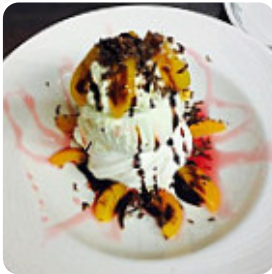




## ***Apricot Meringue Menu***

<https://menulist.menu>

15 King Street Clitheroe, Ribble Valley, United Kingdom  
+441200426933 - <http://www.apricotmeringue.co.uk/>



A complete [menu](#) of Apricot Meringue from Ribble Valley covering all 16 meals and drinks can be found here on the food list. For seasonal or weekly deals, please get in touch via phone or use the contact details provided on the website. What [Catharine Wehner](#) likes about Apricot Meringue:

had a really nice time here on the other day, the staff was great and made our experience even better! the food was great, would recommend defo! and her homemade folding jacket was one of the best folding jackets I've ever tried! I'll be 100% back. next time I'm in clitheroe! [read more](#). The restaurant also offers the possibility to sit outside and eat and drink in beautiful weather, And into the accessible rooms also come guests with wheelchairs or physical limitations. WLAN is available without additional charges. What [Yvette Ward](#) doesn't like about Apricot Meringue:

Visited for cake and cuppa but very disappointed. Tea was fine however desert was tasteless, dry and barely warm. Issue raised with manager but not impressed with how it was dealt with. First visit but will not visit again, [read more](#). At Apricot Meringue from [Ribble Valley](#) you have the opportunity to **try delicious vegetarian dishes**, in which no trace of animal meat or fish was processed, In the morning they serve a tasty breakfast here. Additionally, there are a plethora of **iconic British** dishes on the card guaranteed to satiate every Anglophile's hunger, For a snack, you can also have the tasty **sandwiches**, healthy salads and other snacks.

# *Apricot Meringue Menu*

## *Sweets & Ice*

COOKIES

## *Pizza Standard - á 28cm*

TANGO

## *Hot drinks*

TEA

## *Coffee*

COFFEE

## *Drinks*

DRINKS

## *Ingredients Used*

CHEESE

CRUDE

BUTTER

SAUSAGE

ONION

*These types of dishes are  
being served*

BREAD

TOSTADAS

ICE CREAM

SALAD

PANINI



# *Apricot Meringue Menu*



## *Apricot Meringue*

15 King Street Clitheroe, Ribble Valley, United Kingdom

### **Opening Hours:**

Monday 9:00-17:00

Tuesday 9:00-17:00

Wednesday 9:00-17:00

Thursday 9:00-17:00

Friday 9:00-17:00

Saturday 9:00-17:00

Made with [menulist.menu](https://menulist.menu)

