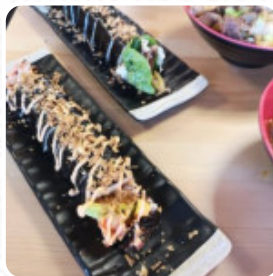




## ***Kimchi Planet Menu***

<https://menulist.menu>

24 Wretham Place, Newcastle upon Tyne, United Kingdom  
+447366066546 - <http://www.kimchiplanet.co.uk>



A **complete [menu](#) of Kimchi Planet** from Newcastle upon Tyne covering all 3 courses and drinks can be found here on the food list. For *seasonal or weekly deals*, please get in touch via phone or use the contact details provided on the website. What [User](#) likes about Kimchi Planet:

We are regular customers with the quality and flavours of Korean food served being excellent. The vegan beef kimchap ([sushi](#)), fried vegetable dumplings and homemade kimchi jars to go are personal favourites. There is a clear amount of talent and love that goes into cooking these hearty and fresh dishes. The staff are always helpful and friendly. [read more](#). The place also offers the possibility to sit outside and eat and drink in beautiful weather.

What [User](#) doesn't like about Kimchi Planet:

I was so excited to try this place as it had great reviews. I really wanted to give it 5/5 (because the food is out of this world and was absolutely amazing the best takeaway we've had) however my decision was sadly based on the customer service I received as soon as I walked through the door. The lady was very unwelcoming and looked at me as tho why she coming in this late (20:15) and food preparation finishes at 20... [read more](#). At the moment many are thinking about a healthier diet; specifically for these Kimchi Planet's food menu provides a wide diversity of [easy to digest meals](#). Additionally, lovers of Korean cuisine will be well catered for at the restaurant with menus like Bap, Kimchi or Jjigae. The **Asian fusion cuisine** is likewise an important part of Kimchi Planet. Anyone who finds the normal and generally known meals too ordinary can here approach with a willingness to experiment and try some exciting combination of ingredients taste, on the menu there are also a lot of Asian dishes.

# *Kimchi Planet Menu*



## *Main courses*

SUSHI

## *Rice*

SPICY CHICKEN

## *Chicken*

ARROZ CON POLLO

## *Fried Rice*

FRIED RICE

*These types of dishes are  
being served*

NOODLES

## *Restaurant Category*

VEGAN

DESSERT

## *Ingredients Used*



KIMCHI

CHICKEN

CHEESE

EGG

TRAVEL

PORK MEAT

BEEF

VEGETABLE

MEAT

# ***Kimchi Planet Menu***



## ***Kimchi Planet***

24 Wretham Place, Newcastle upon Tyne, United Kingdom

### **Opening Hours:**

Sunday 12:00-15:00

Monday 11:30-21:00

Wednesday 11:30-21:00

Thursday 11:30-21:00

Friday 11:30-21:00

Saturday 11:30-21:00

Made with [menulist.menu](https://menulist.menu)

 gallery image

