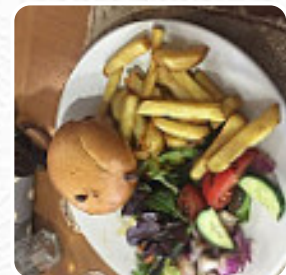
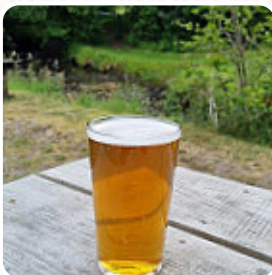




## ***The Bridges Menu***

<https://menulist.menu>

Bridges, Shrewsbury United Kingdom, United Kingdom  
(+44)1588650260 - <https://twobridges.co.uk>



A **comprehensive [menu](#) of The Bridges** from Shrewsbury United Kingdom covering all 14 meals and drinks can be found here on the card. For **seasonal or weekly deals**, please get in touch via phone or use the contact details provided on the website. What [User](#) likes about The Bridges:

what an incredible stay we had. only a wonderful pub in the middle of nowhere with the most extraordinary selection of real ales. eating is just to die for,superbly home cooked with all in my party eating every morsel. the apartment was cozy and very comfortable with a good sleep had from all. the English breakfast was great again.

I recommend this magnificent hostel to all Walkers,Ramblers and real ale drink everywh... [read more](#). The Bridges from Shrewsbury United Kingdom is valued for its *tasty burgers*, to which spicy fries, *salads* and other sides are presented, At the bar, you can unwind with a freshly tapped beer or other alcoholic and non-alcoholic drinks. If you decide to come for breakfast, a hearty brunch is ready for you, Lovers of the British cuisine are impressed by the extensive selection of traditional menus and enjoy the taste of England.

# *The Bridges Menu*



## *Alcoholic Drinks*

BEER

## *Main courses*

LASAGNA

## *Fish dishes*

FISH

## *Starters & Salads*

RISOTTO

## *Breakfast Menu*

ENGLISH BREAKFAST

## *Drinks*

DRINKS

## *Restaurant Category*

BAR

## *Ingredients Used*

BEEF

PORK MEAT

SALMON

CHEESE

## *These types of dishes are being served*

LAMB

SALAD

BURGER

FISH

# *The Bridges Menu*



## *The Bridges*

Bridges, Shrewsbury United Kingdom, United Kingdom

**Opening Hours:**  
Monday 09:00-23:00  
Tuesday 09:00-23:00  
Wednesday 09:00-23:00  
Thursday 09:00-23:00  
Friday 09:00-23:00  
Saturday 09:00-23:00  
Sunday 09:00-23:00

Made with [menulist.menu](https://menulist.menu)

