

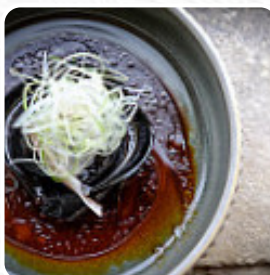
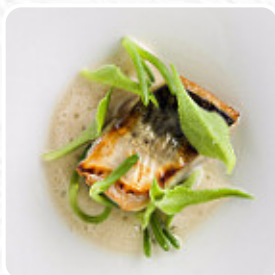


## The Dining Room At Whatley Manor Menu

<https://menuweb.menu>

Easton Grey, Wiltshire, United Kingdom

+441666822888 - <http://www.whatleymanor.com>



Here you can find the [menu](#) of **The Dining Room At Whatley Manor** in Wiltshire. At the moment, there are **30** menus and drinks on the food list. The Dining Room at this establishment boasts two Michelin stars and features Niall Keating's innovative menus highlighting his Modern British cuisine infused with global influences. Niall, who was awarded Michelin's European Young Chef of the Year, recently earned his second Michelin star. The Dining Room can be found in the Good Food Guide and Niall was named Champion of Champions in the Great British Menu. Guests can enjoy a gastronomic menu experience starting in the Drawing Room before being seated in the restaurant. Dinner is available for booking from Thursday to Sunday, with a Great British Menu Dining Experience offered on Friday and Saturday lunchtimes.

# The Dining Room At Whatley Manor M



## Non Alcoholic Drinks

TONIC

## Pizza

FUSION PIZZA

## Drinks

DRINKS

## Pork

PORK BELLY

## Rice

RISOTTO

## Appetizer

TEMPURA

## Dessert

TARTUFO

## Hot Drinks

COFFEE

TEA

## Restaurant Category

BAR

DESSERT

GLUTEN FREE

VEGETARIAN

## These Types Of Dishes Are Being Served

FISH

DESSERTS

WRAP

LAMB

BREAD

MEAT

LOBSTER

## Ingredients Used



CHOCOLATE

CHORIZO

BEEF

BUTTER

CHEESE

PORK MEAT

SALMON

TORTELLINI

SCALLOP

HALIBUT

# The Dining Room At Whatley Manor M



## The Dining Room At Whatley Manor

Easton Grey, Wiltshire, United Kingdom

**Opening Hours:**

Thursday 18:00-20:30

Friday 18:00-20:30

Saturday 18:00-20:30

Sunday 18:00-20:30

Made with [menuweb.menu](https://menuweb.menu)

