

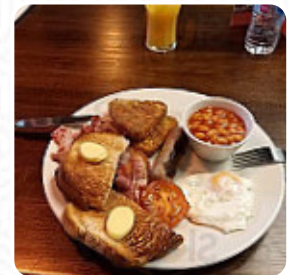
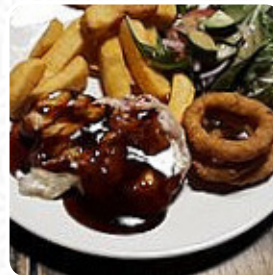
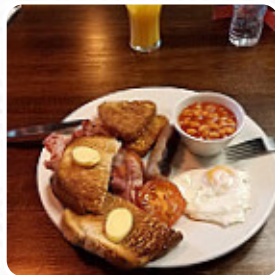


Isle Of Ely Menu

<https://menulist.menu>

Downham Road, East Cambridgeshire, United Kingdom

+441353888731 - <https://www.greeneking-pubs.co.uk/pubs/cambridgeshire/isle-of-ely/>



Here you can find the menu of Isle Of Ely in East Cambridgeshire. At the moment, there are 17 courses and drinks on the food list. You can inquire about **changing offers** via phone. What [Adrian Harrison](#) likes about Isle Of Ely:

today for the first time visited, enjoyed a few beers outside in the sun, very nice, a bit waiting for eating because they were very short coworkers, but well wait, eat excellent and great worth for money. [read more](#). The rooms in the restaurant are wheelchair accessible and can also be used with a wheelchair or physiological disabilities, Depending on the weather conditions, you can also sit outside and eat. WLAN is available at no extra cost. What

[George Carter](#) doesn't like about Isle Of Ely:

Arrived Counted tables occupied. Placed our food order and took advantage of the advertised lunch club deal of a sandwich toastie wrap with chips and drink for After minutes waiting the customers that had ordered before us...asked when their meals would be arriving. Not minutes later, voila. After minutes we asked the same question and again, minutes there it was. Same thing for a table. Our meal was missing the chip... [read more](#). A journey through Great Britain without getting on a plane is easily possible when it comes to culinary delights: Isle Of Ely in East Cambridgeshire traditionally shines for example with *Fish and Chips*, mashed potatoes or **roast with Yorkshire Pudding** and for dessert a delicious Trifle, Of course, you also have to try the scrumptious burgers, that come with sides like fries, salads, or wedges provided. After the meal (or during it), you can also relax at the bar with a alcoholic or non-alcoholic drink, Furthermore, the drinks menu in this eatery is impressive and offers a good and extensive variety of beers from the area and from worldwide, which are definitely worth a try.

Isle Of Ely Menu



Alcoholic Drinks

BEER

Toast

TOAST

Starters & Salads

POTATOE CHIPS

Dessert

ETON MESS

Saucen, Chutneys & Extras

GRAVY

Bebidas

7UP

Dinner Entrées

LAMB SHANK

Drinks

DRINKS

Condiments and Sauces

CURRY

Restaurant Category

BAR

Ingredients Used

POTATOES

BEEF

*These types of dishes are
being served*

TOSTADAS

BURGER

ROAST BEEF

LAMB

STEAK

Isle Of Ely Menu



Isle Of Ely

Downham Road, East
Cambridgeshire, United Kingdom

Opening Hours:

Monday 10:00 -23:00
Tuesday 10:00 -23:00
Wednesday 10:00 -23:00
Thursday 10:00 -23:00
Friday 10:00 -00:00
Saturday 10:00 -00:00
Sunday 10:30 -23:00

Made with menulist.menu

 gallery image

