

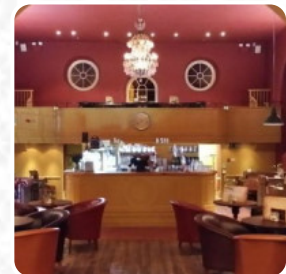
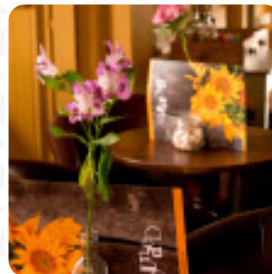
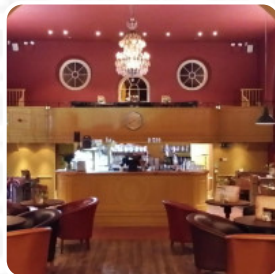
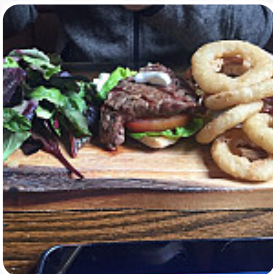


Grounded Corsham Menu

<https://menulist.menu>

The Old Chapel, Wiltshire, United Kingdom

+441249715555 - <http://www.groundedcafebars.co.uk/contact/grounded-corsham>



On this homepage, you can find the **complete [menu](#) of Grounded Corsham** from Wiltshire. Currently, there are **18** courses and drinks up for grabs. For *seasonal or weekly deals*, please contact the restaurant owner directly.

You can also contact them through their website. What [Christina C](#) likes about Grounded Corsham: We live locally and have been regulars for quite a while. We particularly love the breakfast, the food is great and good value. However, we feel the place is gawn down hill. It looks unkept and the ladies toilets are a disgrace. It's such a lovely building, it really needs a clean up. [read more](#). The premises on site are wheelchair accessible and can also be used with a wheelchair or physical disabilities, and there is complimentary WiFi. If the weather are right, you can also have something to eat outside. What [Adrienne Tendo](#) doesn't like about Grounded Corsham:

Unfortunately not great value. £9.35 for two cups of tea(tea bag in cup ! no tea pot and one very small piece of a raspberry tray bake. The place also lacked atmosphere You need to do so much better if you want to survive as a business. Sorry I take no pleasure in writing a poor review. [read more](#). A visit to Grounded Corsham is particularly valuable due to the extensive variety of coffee and tea specialties, Those who are passionate about the British cuisine will enjoy the large diversity of traditional meals and indulge in the taste of England. There's also delicious [pizza](#), baked fresh using traditional methods, The yummy [sandwiches](#), healthy salads and other snacks can be planned well as a snack.

Grounded Corsham Menu



Main courses

SIDE SALAD

Fish dishes

FISH FINGER

Starters & Salads

POTATOE CHIPS

Saucen, Chutneys & Extras

GRAVY

Hot drinks

TEA

Coffee

COFFEE

Restaurant Category

VEGETARIAN

These types of dishes are being served

FISH

SALAD

PANINI

Ingredients Used

SAUSAGE

KALE

POTATOES

AVOCADO

ONION

CHEESE

RASPBERRY

Grounded Corsham Menu



Grounded Corsham

The Old Chapel, Wiltshire, United Kingdom

Opening Hours:

Sunday 09:00-18:00

Monday 09:00-18:00

Tuesday 09:00-18:00

Wednesday 09:00-18:00

Thursday 09:00-18:00

Friday 09:00-22:30

Saturday 09:00-22:30

Made with menulist.menu

 gallery image

