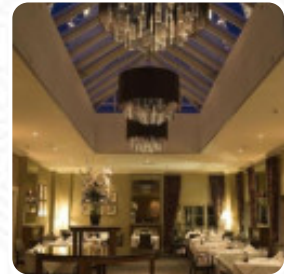
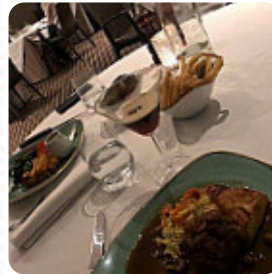




## ***The Orangery Menu***

<https://menulist.menu>  
Balbirnie Park, Fife, United Kingdom  
(+44)1592610066 - <http://www.balbirnie.co.uk>



Here you can find the [menu](#) of *The Orangery* in Fife. At the moment, there are 17 dishes and drinks on the menu.

You can inquire about **changing offers** via phone. What [Wyandour](#) likes about The Orangery:

We ate last night from the seven course tasting menu. Food overall was very good indeed. In particular the amuse Bouche or salt cod brandade in a pie shape tremendous flavour. Pigeon lovely flavours. Tortellini was outstanding. Sorbet was very good indeed. Parfait was good but the little puff candy was hard. Blue cheese to complete was very good.. Flight of wines complemented the food. Waiting staff were outstanding.... [read more](#).

As a visitor, you can use the WiFi of the place free of charge, Depending on the weather, you can also sit outside and be served. The rooms on site are accessible, and therefore no problem for clientele with wheelchairs or physiological limitations. What [Aaron Walker](#) doesn't like about The Orangery:

Staff unhelpful, no lifts, disabled parking only 2 places, electric 4 spaces, ramp to the hotel not sufficient, won't come back to this place for wedding or afternoon tea [read more](#). In the morning, you can enjoy a diverse brunch at The Orangery, as much as you want, Furthermore, the visitors of the restaurant enjoy the extensive variety of the differing **coffee and tea specialities** that the restaurant has available. Furthermore, there are many typically British meals on the card that make the English heart beat faster, the place serves however also menus typical for Europe.

# *The Orangery Menu*



## *Non alcoholic drinks*

BOTTLED WATER

## *Pasta*

TORTELLINI

## *Extras*

BRIE

## *Side dishes*

MAISKOLBEN

## *Starters & Salads*

FRIES

## *Dessert*

SORBET

## *Drinks*

DRINKS

## *Restaurant Category*

VEGETARIAN

DESSERT

*These types of dishes are being served*

BURGER

COD

## *Ingredients Used*



CORN

CHEESE

BLUE CHEESE

MEAT

BEEF

SEAFOOD

# *The Orangery Menu*



## *The Orangery*

Balbirnie Park, Fife, United Kingdom

**Opening Hours:**

 gallery image