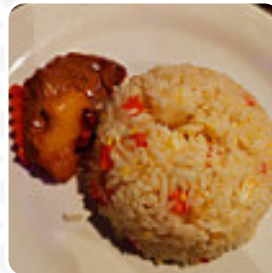
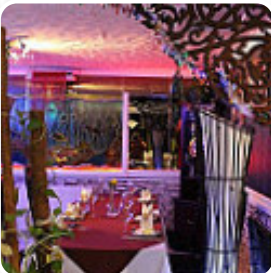




## ***Thai Legend Menu***

<https://menulist.menu>

10-12 Station Road, Sandiacre, Erewash, United Kingdom  
**+441158373283 - <https://thailegend.co/>**



A comprehensive menu of Thai Legend from Erewash covering all 17 dishes and drinks can be found here on the menu. For *seasonal or weekly deals*, please get in touch via phone or use the contact details provided on the website. What [User](#) likes about Thai Legend:

had to put something in sandiacre. did not definitiwy my neck of the forest, and needed to eat so sought-after locals for a recommendation. they have not been wrong! really enjoyed my massive curry and kokosreis, and my partner loved his ped phat prik (I don't child her! who was actually a duck guide plate. would definitely recommend this place : [read more](#). The restaurant also offers the possibility to sit outside and be served in pleasant weather, And into the accessible rooms also come clientele with wheelchairs or physiological disabilities. What [happejo](#) doesn't like about Thai Legend:

Very disappointed with the meal, it was bland actually wasn't edible. Some of my friends enjoyed their meals , but mine was poor. The drinks are very expensive £7.00 for a bottle of beer and £2.50 for a soda water ! The cutlery for the main course was passed along the table... most strange. Feel a bit sad for my friend whose birthday it was , maybe the normal chef wasn't working as it was in a Monday. But that doesn't... [read more](#). With **typical Asian spices delicious** traditional menus are prepared in the kitchen of Thai Legend in Erewash, The creative fusion of different meals with fresh and occasionally daring ingredients is highly valued by the visitors - a nice example of Asian Fusion. After the meal (or during it), you have the opportunity to still relax at the bar with a **alcoholic or non-alcoholic drink**, Thai menus are prepared here with the famous spices and (fish-) sauces.

# *Thai Legend Menu*



## *Non alcoholic drinks*

LEMON

## *Starters & Salads*

WINGS

## *Chicken*

CHICKENWINGS

## *Currys*

MASSAMAN CURRY

## *Indian*

CHICKEN CURRY

## *Asiatische Gerichte - Huhn*

THAI CURRY

## *Drinks*

DRINKS

## *Condiments and Sauces*

CURRY

## *Main Dishes*

RED CURRY

GREEN CURRY

## *Thai specialties\**

PAD THAI

THAI CHICKEN

## *These types of dishes are being served*

LAMB

FISH

## *Ingredients Used*

CHICKEN

DUCK

BEEF

# Thai Legend Menu



## Thai Legend

10-12 Station Road, Sandiacre,  
Erewash, United Kingdom

### Opening Hours:

Sunday 16:30-21:30  
Monday 16:30-21:30  
Tuesday 16:30-21:30  
Wednesday 16:30-21:30  
Thursday 16:30-21:30  
Friday 16:30-21:30  
Saturday 16:30-21:30

Made with [menulist.menu](https://menulist.menu)

 gallery image

