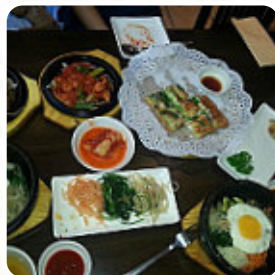




Soju Menu

<https://menulist.menu>

32 Windmill Street, City of London, Westminster, United Kingdom



Here you can find the menu of Soju in City of London, Westminster. At the moment, there are **17** menus and drinks on the card. You can inquire about seasonal or weekly deals via phone. What [User](#) likes about Soju: small Korean restaurant with friendly staff and decent meals. bbq meat was tender and juicy, fried chicken came in generous part. the chicken was still juicy in the inner and the teig and sauce were delicious. there were many different flavors from soju to choose. a beautiful place to go for drinks and delicious food. [read more](#). The restaurant also offers the possibility to sit outside and eat in pleasant weather. What [kelbanzai](#) doesn't like about Soju:

Went there at about 10.15, knew that their closing time was 11. Asked if we could come for drink. Waiter said what do you want, we are closing in 30minutes. i said we just want to have a drink, he said no, no food no drinks. Dude, then dont put your restaurant name as soju and co, if you dont even offer drinks alone without food. Utterly rude and angry with his reaction. Walked down the street about 7min, found this... [read more](#). The customers love it when Asian cuisine meets a bit of creativity. That's exactly what you can expect at the Soju from City of London, Westminster, with its successful Asian fusion cuisine - the perfect blend of familiar meets the adventurous world of fusion cuisine, Also, admirers of Korean cuisine will have their culinary desires fulfilled at the restaurant with menus like Bap, Kimchi or Jjigae. Also, they serve you **delicious seafood menus**, the menu also includes *fine vegetarian meals*.

Soju Menu

Beef dishes

BULGOGI

Dessert

PANCAKE

Main Course

PORK BELLY

Hauptgerichte - Chicken

FRIED CHICKEN

Drinks

DRINKS

Mixed Rice

BIBIMBAP

Restaurant Category

BBQ SAUCE

***These types of dishes are
being served***

NOODLES

WRAP

SOUP

TUNA STEAK

Ingredients Used

PORK MEAT

BEEF

KIMCHI

CHEESE

CHICKEN

MEAT



Soju Menu



Soju

32 Windmill Street, City of
London, Westminster, United
Kingdom

Opening Hours:

 gallery image