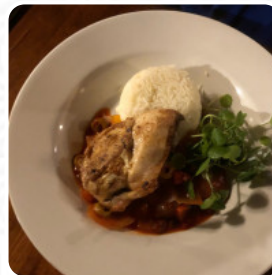




Blue Anchor Inn Menu

<https://menulist.menu>

East Aberthaw, The Vale of Glamorgan, United Kingdom
+441446750329 - <http://www.blueanchoraberthaw.com>



A comprehensive [menu](#) of Blue Anchor Inn from The Vale of Glamorgan covering all 17 menus and drinks can be found here on the menu. For changing offers, please get in touch via phone or use the contact details provided on the website. What [Inspire04967515545](#) likes about Blue Anchor Inn:

Lovely Saturday afternoon lunch for my parents anniversary. Eight of us so quite a large group which can sometimes cause problems, but food and service great. Can't fault it. Looking forward to trying out the rest of the menu. Top place. [read more](#). As a customer, you can use the WLAN of the restaurant at no extra cost, Depending on the weather conditions, you can also sit outside and eat. In the morning, a diverse brunch is offered at Blue Anchor Inn in The Vale of Glamorgan that you can enjoy as much as you like, At the bar, you can unwind with a **cool beer** or other alcoholic and non-alcoholic drinks. Moreover, there are numerous **typically British** menus on the menu that are guaranteed to excite every Englishman's taste buds, For a snack in between, the tasty *sandwiches*, small salads, and other snacks are suitable.

Blue Anchor Inn Menu



Salads

COLESLAW

Fish dishes

FISH AND CHIPS

Main Dishes

GREEN CURRY

Dessert

STICKY TOFFEE PUDDING

Asiatische Gerichte - Huhn

THAI CURRY

Cereals

STARTING

Drinks

DRINKS

Condiments and Sauces

CURRY

Starters & Salads

FRIES

POTATOE CHIPS

Ingredients Used

MEAT

CHICKEN

*These types of dishes are
being served*

FISH

BURGER

BREAD

PANINI

SALAD

Blue Anchor Inn Menu



Blue Anchor Inn

East Aberthaw, The Vale of
Glamorgan, United Kingdom

Opening Hours:

Sunday 12:00-22:30
Monday 11:00-23:00
Tuesday 11:00-23:00
Wednesday 11:00-23:00
Thursday 11:00-23:00
Friday 11:00-23:00
Saturday 11:00-23:00

Made with menulist.menu

 gallery image

