

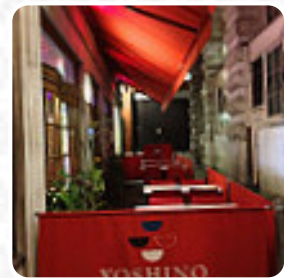
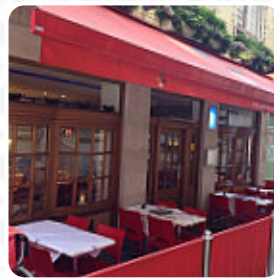


Yoshino Menu

<https://menulist.menu>

United Kingdom, City of London, Westminster

+442072826622, +442072876622 - <http://www.yoshino.net>



Here you can find the [menu](#) of Yoshino in City of London, Westminster. At the moment, there are 17 menus and drinks on the food list. You can inquire about seasonal or weekly deals via phone. What [User](#) likes about Yoshino:

a beautiful place hidden in Piccadilly for trying Japanese eating. The sushi was really delicious and all dishes went really well together. A really good restaurant [read more](#). In beautiful weather you can even eat and drink in the outdoor area, and there is free WLAN. What [User](#) doesn't like about Yoshino:

Best sushi in West London. The New York rolls from Yoshino, Shaftsbury Avenue are second to none. For rolls is incredible value. Seriously, ditch your Wasabi and Itsu, Yoshino is the one. [read more](#). In the kitchen of Yoshino in City of London, Westminster, traditional dishes are prepared with original Asian spices scrumptious. The **sugar-sweet** desserts of the restaurant also shine not only in the eyes of our little guests. But the undisputed highlight of this place is the fine **Sushi such as Maki and Sashimi**, and a lot of freshly harvested vegetables, fish and meat are used to cook *easily digestible Japanese meals*.

Yoshino Menu



Pizza

FUSION

Main courses

SUSHI

Extras

WASABI

Appetizer

TEMPURA

Dessert

SORBET

Drinks

SAKE

Beilagen und Extras

SOJASAUCE

Spezial-Nudeln

UDON

Restaurant Category

DESSERT

***These types of dishes are
being served***

NOODLES

ICE CREAM

FISH

Ingredients Used

APPLE

TUNA

CHOCOLATE

BEEF

MISO

Yoshino Menu



Yoshino

United Kingdom, City of
London, Westminster

Opening Hours:

Monday 12:00-22:30
Tuesday 12:00-22:30
Wednesday 12:00-22:30
Thursday 12:00-22:30
Friday 12:00-22:30
Saturday 12:00-22:30

Made with menulist.menu

 gallery image

