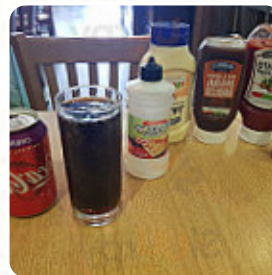
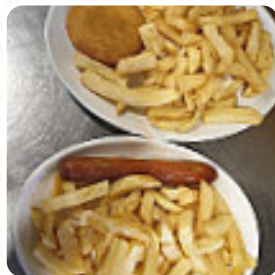
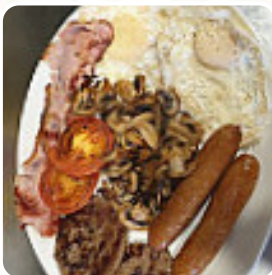




Island Fish Menu

<https://menulist.menu>
120-122 High Street, Swale, United Kingdom
+441795662888 - <http://www.facebook.com/islandfish>



Here you can find the [menu](#) of **Island Fish** in Swale. At the moment, there are 11 courses and drinks on the food list. You can inquire about changing offers via phone. What [User](#) likes about Island Fish: yesterday had a seat fish and chip eating here and it was honestly the best fish and chips I ever had!! the teig was super light and crispy, and the fish was so white (not grayish white as other commercial fish). I would recommend to everyone to eat here, they will not be disappointed. I'm going to go back to 100%. super happy customer also the service was excellent [read more](#). The restaurant is accessible and can therefore also be used with a wheelchair or physical limitations, Depending on the weather, you can also sit outside and eat. What [User](#) doesn't like about Island Fish:

We went as a family of 5 and my daughter doesn't eat meat so she ordered a [vegetarian](#) meal, when she took a bite she realised it was actually chicken. When we complained no one seemed bothered and didn't offer to remake the food. Appalling...More [read more](#). A roundtrip through Great Britain without getting on a plane is effortlessly possible when it comes to culinary delights: Island Fish in Swale traditionally shines for example with Fish and Chips, mashed potatoes or roast with Yorkshire Pudding and as dessert a delicious Trifle, and you can look forward to the fine traditional [seafood](#) cuisine. In case you want to have breakfast, a **tasty brunch** is offered to you, *delicious* [vegetarian](#) recipes are also on the menu available.

Island Fish Menu



Sandwiches & Hot Paninis

CHEESE BURGER

Fish dishes

FISH AND CHIPS

Drinks

GLASS OF WINE

Starters & Salads

POTATOE CHIPS

Sauces

CURRY SAUCE

Dessert

MILKSHAKES

Hot drinks

TEA

Condiments and Sauces

CURRY

*These types of dishes are
being served*

ROAST BEEF

COD

FISH

Ingredients Used

HADDOCK

PEAS

BEEF

POTATOES

MEAT

SAUSAGE

Island Fish Menu



Island Fish

120-122 High Street, Swale,
United Kingdom

Opening Hours:

Monday 10:00-20:00
Tuesday 10:00-20:00
Wednesday 10:00-20:00
Thursday 10:00-20:00
Friday 10:00-20:00
Saturday 10:00-20:00
Sunday 12:00-20:00

Made with menulist.menu

