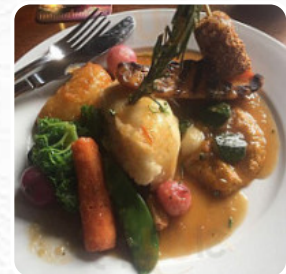
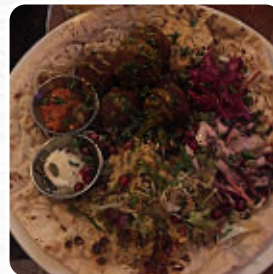
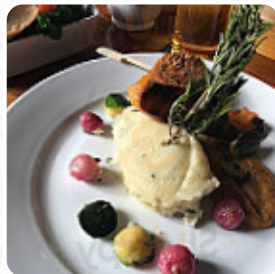




The Black Horse Menu

<https://menulist.menu>

The Black Horse, 68 Front St, Monkseaton, Whitley Bay NE25 8DP, UK, United Kingdom
(+44)1912536931 - <https://www.craftunionpubs.com/black-horse-monkseaton>



A comprehensive menu of The Black Horse from Whitley Bay covering all 17 courses and drinks can be found here on the food list. For *changing offers*, please get in touch via phone or use the contact details provided on the website. What [User](#) likes about The Black Horse:

very beautiful ambience. the two girls serve where very welcoming, helpful and friendly. definitely a fortune for the owners. we ordered their Sunday dinners and can say that it was first class, top notch in presentation, quality and excellent value for money. I can recommend it for one visit, we will certainly be back. I would have given 5/5 if they had real ales, but I think they had sold out. don't worry, hopefully... [read more](#). What [User](#) doesn't like about The Black Horse:

Despite the substantial investment from craft union stone gate : the bar staff need to PUT THEIR PHONES AWAY and serve the customers stood waiting at the bar. 20th March Evening. Manager weak as water and young lad behind the bar needs to look like he's at work not plugged into his phone. Sat on his backside on the back bar!!! You're here to serve for the benefit of your customers not to do what's best and easiest for... [read more](#). At the restaurant you can enjoy the delicious savory dishes while enjoying the enchanting view of the nearby **sights**, Lovers of the English cuisine are impressed by the comprehensive selection of traditional meals and enjoy the taste of England. You can also look forward to scrumptious vegetarian cuisine, You can also unwind at the bar with a **freshly tapped beer** or other alcoholic and non-alcoholic drinks.

The Black Horse Menu



Alcoholic Drinks

BEER

Main courses

NACHOS

Starters & Salads

POTATOE CHIPS

Saucen, Chutneys & Extras

GRAVY

Drinks

DRINKS

Restaurant Category

BAR

DESSERT

*These types of dishes are
being served*

FISH

BURGER

WRAP

LAMB

Ingredients Used

PEAS

SAUSAGE

CHICKEN

CHILI

PORK MEAT

BEEF

The Black Horse Menu



The Black Horse

The Black Horse, 68 Front St,
Monkseaton, Whitley Bay NE25
8DP, UK, United Kingdom

Opening Hours:

Monday 11:00-23:00
Tuesday 11:00-23:00
Wednesday 11:00-23:00
Thursday 11:00-23:00
Friday 11:00-00:00
Saturday 11:00-00:00
Sunday 11:00-23:00

Made with menulist.menu

