

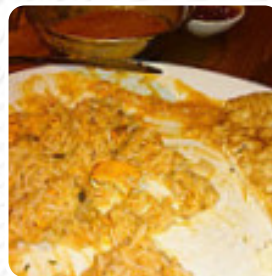


## ***Brewers Fayre Flagstaff Island Menu***

<https://menulist.menu>

Flagstaff Park Lountside, Ashby-de-la-Zouch I-LE65 1JP, United Kingdom

+441530561210



Here you can find the menu of Brewers Fayre Flagstaff Island in Ashby-de-la-Zouch. At the moment, there are 17 menus and drinks on the food list. You can inquire about **seasonal or weekly deals** via phone. What [User](#) likes about Brewers Fayre Flagstaff Island:

this was our first visit during the last time when we were there, it was not very good, but now it is amazing that the staff are beautiful and the menu gives them a great choice to choose, we had both smashed with fries, salat and coleslaw and also garlic brot, I had sweet potato fries that I love but to say eating was delicious, they can also have free afterfilling [read more](#). A roundtrip through Great Britain without getting on a plane is effortlessly possible when it comes to culinary delights: Brewers Fayre Flagstaff Island in [Ashby-de-la-Zouch](#) traditionally shines for instance with Fish and Chips, **mashed potatoes** or roast with Yorkshire Pudding and as dessert a delicious Trifle, Also, the drinks menu at this place is exceptional and offers a significant and varied assortment of both local and international beers, which are definitely worth a try. The *burgers of this place* are among the highlights and are usually served with side dishes such as French fries, leaf and cabbage salads or wedges, It's possible to chill out at the bar with a freshly tapped beer or other alcoholic and non-alcoholic drinks.

# ***Brewers Fayre Flagstaff Island Menu***



## ***Main courses***

RIBS

## ***Extras***

SWEET POTATO

## ***Fish dishes***

FISH

## ***Side dishes***

SWEET POTATO FRIES

## ***Starters & Salads***

FRIES

## ***Drinks***

DRINKS

## ***Salads***

COLESLAW

SALAD

## ***Restaurant Category***

VEGETARIAN

BAR

## ***These types of dishes are being served***

SALAD

FISH

BURGER

## ***Ingredients Used***

GARLIC

BEEF

POTATOES

SALMON

# ***Brewers Fayre Flagstaff Island Menu***



## ***Brewers Fayre Flagstaff Island***

Flagstaff Park Lountside, Ashby-de-la-Zouch I-LE65 1JP, United Kingdom

### **Opening Hours:**

Monday 06:30 -10:30 12:00 -23:00  
Tuesday 06:30 -10:30 12:00 -23:00  
Wednesday 06:30 -10:30 12:00 -23:00  
Thursday 06:30 -10:30 12:00 -23:00  
Friday 06:30 -10:30 12:00 -23:00  
Saturday 07:00 -11:00 12:00 -23:00  
Sunday 07:00 -11:00 12:00 -22:30

Made with [menulist.menu](https://menulist.menu)

 gallery image