

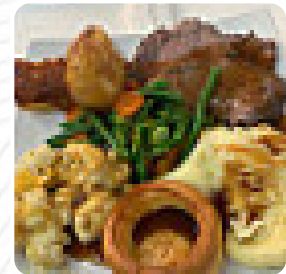
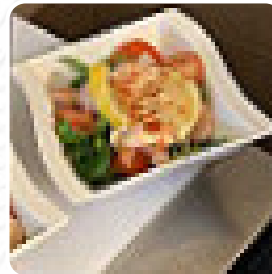


The Wheatsheaf Menu

<https://menulist.menu>

269 Higher Lane, Lymm I-WA13 0TR, United Kingdom

+441925752567,+441925363100 - <http://www.thewheatsheaflymm.co.uk>



On this webpage, you can find the complete menu of The Wheatsheaf from [Lymm](#). Currently, there are 17 courses and drinks available. For changing offers, please contact the owner of the restaurant directly. You can also contact them through their website. What [User](#) likes about The Wheatsheaf: great Sunday dinner, had the bark meat and truthahn duo with 5 veg all excellent £10.95 fabulous worth. pleasant service and beautiful atmosphere. new and from ti a great start. [read more](#). The restaurant also offers the possibility to sit outside and be served in nice weather, and there is free WiFi. A journey through Great Britain without getting on a plane is absolutely possible when it comes to culinary delights: The Wheatsheaf in Lymm traditionally shines for instance with Fish and Chips, mashed potatoes or *roast with Yorkshire Pudding* and for dessert a **sweet Trifle**, Naturally, you can't miss out on the **delicious burgers**, which are accompanied by sides like fries, salads, or wedges offered. Of course, the right drink to accompany a meal is a must; for this purpose, this gastropub offers you a wide range of tasty, local alcoholic beverages like beer or wine, [delicious vegetarian recipes](#) are also on the menu available.

The Wheatsheaf Menu



Main courses

RIBS

Indian

CHICKEN DARTS

Barbecue

BBQ RIBS

Coffee

COFFEE

Restaurant Category

BBQ SAUCE

BAR

Alcoholic Drinks

SAUVIGNON BLANC

MARSALA

BEER

Ingredients Used

MEAT

APPLE

CHICKEN

BEEF

These types of dishes are being served

FISH

TUNA STEAK

LAMB

BURGER

The Wheatsheaf Menu



The Wheatsheaf

269 Higher Lane, Lymm I-WA13
OTR, United Kingdom

Opening Hours:

Monday 12:00-23:00
Tuesday 12:00-23:00
Wednesday 12:00-23:00
Thursday 12:00-23:00
Friday 12:00-23:00
Saturday 12:00-23:00
Sunday 12:00-23:00

Made with menulist.menu

