

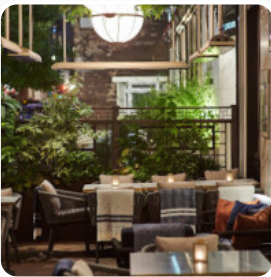


## ***Pop Up Summer Terrace At The Churchill Menu***

<https://menulist.menu>

30 Portman Square London, London, United Kingdom

+442072992037,+442072992035 - [https://www.thechurchillbar.co.uk/?src=prop\\_lonch\\_en\\_misc\\_other\\_gmb%20churchill%20bar\\_x](https://www.thechurchillbar.co.uk/?src=prop_lonch_en_misc_other_gmb%20churchill%20bar_x)



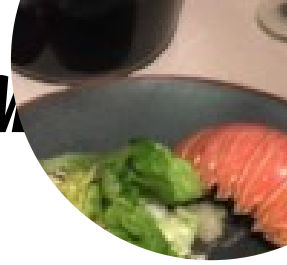
Here you can find the menu of Pop Up Summer Terrace At The Churchill in London. At the moment, there are 17 menus and drinks on the menu. You can inquire about [changing offers](#) via phone. What [User](#) likes about Pop Up Summer Terrace At The Churchill:

Great location venue. Was beautifully set up and designed for UK's temperamental weather. They had a great food menu but the limited drink's menu was a bit of a disappointment considering the hotel is famous for their drinks and extensive options. No cocktails or mocktails available besides a single signature one which seemed very odd to me considering this is a summer pop up terrace where you'd expect there to be ma... [read more](#).

What [User](#) doesn't like about Pop Up Summer Terrace At The Churchill:

a little off. in the grunde a pre-set in the parking lot. we do not expect the standard of bars in this hotel. comfort and service indifferent and high traffic noises. we had to ask for nuts/cracks, which are normally supplied with drinks in an expensive hotel bar. we were calculated for moth-eating-livens at a height of £5 that we did not touch. will not come back. [read more](#). During a meal, a good drink is essential. In this gastropub, you not only get delicious dishes from the menu but also a comprehensive and particularly good diversity of **good beers and other alcoholic beverages** that go well with the food, Those who are passionate about the English cuisine will enjoy the extensive selection of traditional meals and indulge in the taste of England. At the bar, you can still relax after the meal (or during it) with an alcoholic or non-alcoholic drink, here they serve a *comprehensive brunch* for breakfast.

# *Pop Up Summer Terrace At The Churchill M*



## *Starters & Salads*

POTATOE CHIPS

## *Fingerfood*

CALAMARES

## *Drinks*

DRINKS

## *Biscuits and Cookies*

CHEESECAKE

## *Restaurant Category*

CUBAN

COCKTAIL

## *These types of dishes are being served*

PASTA

LOBSTER

FISH

BREAD

## *Ingredients Used*

POTATOES

SWEET POTATOES

CHEESE

EGGS

DUCK

BEEF

# *Pop Up Summer Terrace At The Churchill M*



## *Pop Up Summer Terrace At The Churchill*

30 Portman Square London,  
London, United Kingdom

**Opening Hours:**  
Tuesday 19:00-22:00  
Wednesday 19:00-22:00

 gallery image