

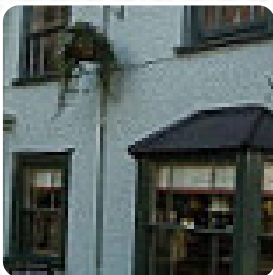


## Jolly Fisherman Menu

<https://menuweb.menu>

8 Station Road, East Hertfordshire, United Kingdom

+441920870125, +441797362224 - <http://mcmullens.co.uk/jollyfisherman>



On this homepage, you can find the **complete [menu](#) of Jolly Fisherman** from East Hertfordshire. Currently, there are **29** menus and drinks available. Nestled by the River Lee just a stone's throw away from the center of St. Margarets near Ware, this picturesque pub was originally purchased for £2,100. It's the ideal spot for enjoying alfresco dining on the patio alongside the scenic waterside. In colder weather, cozy up by the roaring fires and indulge in a variety of Great British pub food, slow-roasted Sunday meats, daily specials, pub classics, delicious desserts, homemade soups, all accompanied by locally brewed real ales, fine wines, and fresh coffee. Truly a delightful dining experience!.

# Jolly Fisherman Menu



## Non Alcoholic Drinks

WATER

## Burger

CHEESE BURGER

## Fish Dishes

FISH AND CHIPS

## Sauces

BBQ

## From The Grill

MIXED GRILL

## Spirits

MARTINI

## Fresh Juices

CARROT JUICE

## Drinks

BEER

DRINKS

## Starters & Salads

FRENCH FRIES

POTATO CHIPS

## Dessert

CHEESECAKE

STICKY TOFFEE PUDDING

## Restaurant Category

BAR

VEGETARIAN

DESSERT

GLUTEN FREE

## Ingredients Used



BROCCOLI

POTATOES

SAUSAGE

CHEESE

VEGETABLES

BEEF

## These Types Of Dishes Are Being Served

MEAT

ROAST BEEF

ICE CREAM

FISH

SALAD

BURGER

# Jolly Fisherman Menu



## Jolly Fisherman

8 Station Road, East  
Hertfordshire, United Kingdom

### Opening Hours:

Monday 11:00-23:30  
Tuesday 11:00-23:30  
Wednesday 11:00-23:30  
Thursday 11:00-23:30  
Friday 11:00-23:30  
Saturday 11:00-23:30  
Sunday 12:00-22:30

Made with [menuweb.menu](https://menuweb.menu)

