

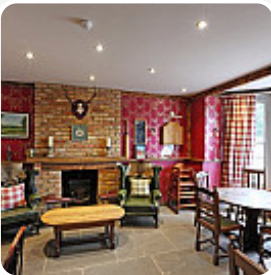


## The Plough Inn's English Steakhouse Menu

<https://menuweb.menu>

Coldharbour, Mole Valley, United Kingdom

+441306711793 - <http://www.ploughinn.com/>



On this webpage, you can find the **complete [menu](#) of The Plough Inn's English Steakhouse** from Mole Valley. Currently, there are **30** meals and drinks up for grabs. The Plough Inn in Coldharbour is a charming 17th-century country inn nestled in the beautiful Surrey Hills countryside. The inn offers cozy B&B accommodation with a delicious full English breakfast, a selection of excellent local food, and features the Leith Hill Brewery where guests can enjoy freshly brewed real ales. Additionally, the inn's Barn is available for hosting functions and events.

# The Plough Inn's English Steakhouse Menu



## Burger

BEEF BURGER

## Fish Dishes

FISH AND CHIPS

## Rice

RISOTTO

## Cocktails

BLOODY MARY

## Beef

RUMP

## Asiatische Gerichte - Huhn

THAI CURRY

## Hot Drinks

COFFEE

## Drinks

BEER

DRINKS

## Dessert

FRESH FRUIT SALAD

BROWNIE

## Restaurant Category

GLUTEN FREE

DESSERT

VEGETARIAN

## These Types Of Dishes Are Being Served

SOUP

LAMB

PASTA

BREAD

BURGER

FISH

## Ingredients Used



ONION

TORTELLINI

FRUIT

BUTTER

PORK MEAT

HAM

BEEF

DUCK

CHOCOLATE

EGG

# The Plough Inn's English Steakhouse M



## The Plough Inn's English Steakhouse

Coldharbour, Mole Valley, United Kingdom

### Opening Hours:

Sunday 12:00-15:45

Monday 12:00-14:45

Tuesday 12:00-14:45

Wednesday 12:00-14:45

Thursday 12:00-14:45

Friday 12:00-14:45

Saturday 12:00-14:45

Made with [menuweb.menu](https://menuweb.menu)

