



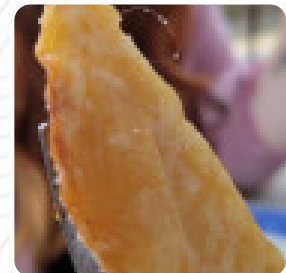
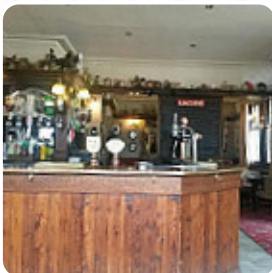
The Worlds End Menu

<https://menulist.menu>

65 Bond End, Knaresborough, North Yorkshire, Harrogate, United Kingdom

+441423864930,+441423863221 -

<http://www.facebook.com/pages/The%20Worlds%20End%20Pub/152312301506695/>



A **complete menu** of **The Worlds End** from Harrogate covering all **18** menus and drinks can be found here on the food list. For changing offers, please get in touch via phone or use the contact details provided on the website. What [User](#) likes about The Worlds End:

end the world knaresborough my favorite of the four bars that I visited on my day trip to this fabulous city. I mentioned some World's end pubs in my book watch the signs! watch the signs! and that could have easily connected to them. Maybe mine. next book that includes. decorated with a mothership entrance sign (the pub is close to the actual motherton inn), World's end gets its name from being at the rande of the c... [read more](#). The restaurant is accessible and can therefore also be used with a wheelchair or physiological disabilities, Depending on the weather conditions, you can also sit outside and have something. What [User](#) doesn't like about The Worlds End:

Worlds worst pub! Maybe that's why the name! What can I say? The manager was more interested in talking to her staff about Christmas than customers? A man took a menu to show his family in the car park and the chef (I think he...was the chef) asked "why you let him run off with a menu (she replied no we have loads of menu's and what does it matter? He replied I just looking at the time and ordering so we can all go h... [read more](#). During meals, a refreshing drink is essential. In this [gastropub](#), you will find not only tasty cuisine, but also a large and comprehensive selection of good beers and other alcoholic drinks that compliment the food, Don't miss the chance to try the tasty [pizza](#), prepared fresh in an traditional way. You have the option to, after the meal (or during it), also relax at the bar with an *alcoholic or non-alcoholic drink*, The tasty sandwiches, healthy salads and other snacks are also suitable for a snack.

The Worlds End Menu



Non alcoholic drinks

WATER

Alcoholic Drinks

BEER

Main courses

LASAGNA

Fish dishes

FISH AND CHIPS

Side dishes

SCAMPI

Sauces

GRAVY

Mexican dishes

CHILLI SAUCE

Beverages

WATER BOTTLE

Bread

GARLIC BREAD

Drinks

DRINKS

Restaurant Category

VEGETARIAN

BAR

Ingredients Used

GARLIC

SAUSAGE

These types of dishes are being served

FISH

PIZZA

TUNA STEAK

BREAD

The Worlds End Menu



The Worlds End

65 Bond End, Knaresborough,
North Yorkshire, Harrogate,
United Kingdom

Opening Hours:

Sunday 11:00-21:00
Monday 11:00-21:00
Tuesday 11:00-21:00
Wednesday 11:00-21:00
Thursday 11:00-21:00
Friday 11:00-21:00
Saturday 11:00-21:00

Made with menulist.menu

 gallery image

