

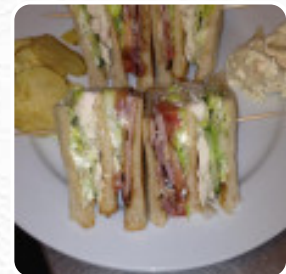


The Corner Cafe Menu

<https://menulist.menu>

582 Burnley Road, Rossendale, United Kingdom

+441706217721 - <https://tranes.top/the-corner-t54g8vk>



On this webpage, you can find the complete menu of The Corner Cafe from [Rossendale](#). Currently, there are 18 menus and drinks up for grabs. For **seasonal or weekly deals**, please contact the restaurant owner directly. You can also contact them through their website. What [ejnicholson](#) likes about The Corner Cafe:

This cafe is an absolute gem. The breakfasts are perfectly cooked (and I am VERY fussy), the service is fantastic, food arrives promptly, it is spotlessly clean. What more could you ask delicious homemade cakes and flapjacks? They have those too! Individual chocolate orange cheesecake was unbelievably good. And they do takeaway. With this standard of food and service it can get busy, so consider booking ahead. Highly... [read more](#).

In pleasant weather you can even be served in the outdoor area, And into the accessible spaces also come customers with wheelchairs or physical disabilities. WiFi is available at no extra cost. What [Edward Scott](#) doesn't like about The Corner Cafe:

Great cafe. Worked close by for nearly 2 years and only just tried it. Probably one of the best I've been to food was cooked to perfection, great value for money and lovely service. Will be returning. [read more](#). The Corner Cafe from Rossendale is a comfortable coffee house, where you can enjoy a snack or cake with a warm coffee or a hot chocolate, For a snack, the fine *sandwiches*, healthy salads and other snacks are suitable. If you decide to come for breakfast, a **versatile brunch** is ready for you, Particularly fans of the British cuisine are excited about the large variety of traditional menus and love the typical English cuisine.

The Corner Cafe Menu



Burgers

CHEESE BURGER

Side dishes

MANGO CHUTNEY

Dessert

CHEESECAKE

Fingerfood

ONION RINGS

Extra Soßen

CHUTNEY

Breakfast Menu

ENGLISH BREAKFAST

Coffee

CAFÉ

Drinks

DRINKS

Restaurant Category

DESSERT

*These types of dishes are
being served*

PANINI

BURGER

Ingredients Used

BACON

BEEF

MANGO

ONION

CHOCOLATE

CHEESE

CHICKEN

The Corner Cafe Menu



The Corner Cafe

582 Burnley Road, Rossendale,
United Kingdom

Opening Hours:
Sunday 09:00-14:00
Wednesday 09:00-14:00
Thursday 09:00-14:00
Friday 09:00-14:00
Saturday 09:00-14:00

 gallery image