

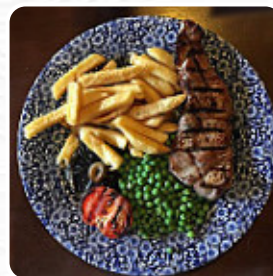


## *The Elms Menu*

<https://menulist.menu>

1060 London Road, Southend-on-Sea, United Kingdom

+442073852205,+441702474687 - <http://www.jdwetherspoon.co.uk>



Here you can find the [menu of The Elms](#) in Southend-on-Sea. At the moment, there are 17 dishes and drinks on the menu. You can inquire about *changing offers* via phone. What [User](#) likes about The Elms:

really great wetherspoons pub local to us. always immerse yourself here for breakfast or lunch and eating is always really fresh and delicious. the personal is very friendly and welcoming. [read more](#). The restaurant also offers the possibility to sit outside and have something in pleasant weather, and there is no-charge WLAN. The premises on site are accessible, and therefore no problem for clientele with wheelchairs or physiological limitations. What [keith47](#) doesn't like about The Elms:

Yes, cheap and fairly) cheerful, but I suppose basic is a better word. Portions were small, ok, so was the price , but as small as my steak and kidney pie, certainly not a pub try pie, the plate was swamped with peas, bit too generous here. Desserts were a bit better, although more ice cream than everything else. Really surprised no apple crumble. The rest of our party of six appeared to have a similar experiences. W... [read more](#). With the large range of [coffee and tea specialties](#), a visit to The Elms becomes even more attractive, Naturally, you should also taste the tasty burgers, accompanied by sides like fries, salads, or wedges served. Of course, the right drink to accompany a meal is a must; for this purpose, this **gastropub** offers you a wide diversity of delicious, local alcoholic beverages like beer or wine, Lovers of the English cuisine are impressed by the comprehensive selection of traditional meals and enjoy the taste of England.

# *The Elms Menu*



## *Fish dishes*

FISH

## *Chicken*

CHICKENWINGS

## *Fingerfood*

ONION RINGS

## *Indian*

CHICKEN CURRY

## *Chicken Wings*

WINGS

## *Restaurant Category*

BAR

## *These types of dishes are being served*

TOSTADAS

BURGER

FISH

## *Ingredients Used*



EGG

BEEF

ONION

CHICKEN

MUSHROOMS

SAUSAGE

BACON

CHILI

# *The Elms Menu*



## *The Elms*

1060 London Road, Southend-on-Sea, United Kingdom

**Opening Hours:**  
Sunday 08:00-23:00  
Monday 08:00-23:00  
Tuesday 08:00-23:00  
Wednesday 08:00-23:00  
Thursday 08:00-23:00  
Friday 08:00-00:00  
Saturday 08:00-00:00

Made with [menulist.menu](https://menulist.menu)

