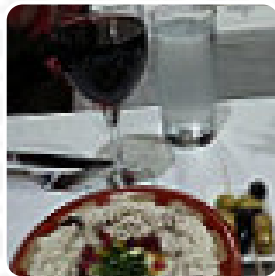




Arabesque Menu

<https://menulist.menu>
United Kingdom, City of London, Westminster
+442070419793,+447764273239



On this site, you can find the [complete menu](#) of Arabesque from City of London, Westminster. Currently, there are 18 meals and drinks up for grabs. For changing offers, please contact the owner of the restaurant directly. You can also contact them through their website. What [diannedZ6605FW](#) likes about Arabesque:

Just around the corner from Hampstead Theatre and recommended by their staff, this restaurant didn't disappoint. Very helpful and pleasant staff, plus an excellent value, extensive and tasty lunch menu. [read more](#).

The rooms in the restaurant are wheelchair accessible and can also be used with a wheelchair or physical disabilities, Depending on the weather, you can also sit outside and eat and drink. What [nolanar](#) doesn't like about Arabesque:

Cramped seating with cold interior as door kept left open as people going in and out. Took 20 mins for time to order from seating down. Waitress was working like a headless chicken but very much under staffed. Lamb shawarma was dry, the salad average and fries was underdone. Generally whole meal was a rush. The complimentary baklava was a nice touch but too much of a rush as had a show booked. [read more](#). At Arabesque in City of London, Westminster you can **enjoy delicious vegetarian meals**, that are free from any animal meat or fish, You can take a break at the bar with a freshly tapped beer or other alcoholic and non-alcoholic drinks. But the undisputed highlight of this place is the tasty Sushi such as Maki and Sashimi, In the morning they serve a **varied breakfast** here.

Arabesque Menu



Salads

SALAD

Sushi Rolls

SUSHI

Starters & Salads

FRIES

Indian

BIRYANI

Biryani

VEG BIRYANI

Turkish specialties

BAKLAVA

Carni di Manzo - vom Rind

MIXED GRILL

Condiments and Sauces

HUMMUS

Restaurant Category

MEDITERRANEAN

VEGETARIAN

These types of dishes are being served

SALAD

LAMB

Ingredients Used

CHICKEN

VEGETABLES

YOGURT

MEAT

OLIVES

HONEY

Arabesque Menu



Arabesque

United Kingdom, City of
London, Westminster

Opening Hours:

 gallery image