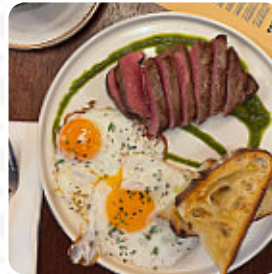




Folk Menu

<https://menulist.menu>
169-171 Burton Rd, Manchester, United Kingdom
+441614452912 - <https://www.folkdidsbury.co.uk/>



On this homepage, you can find the **complete [menu](#) of Folk** from Manchester. Currently, there are 18 dishes and drinks available. For *seasonal or weekly deals*, please contact the restaurant owner directly. You can also contact them through their website. What [User](#) likes about Folk: fab lunch at folk last minute lunch decision midweek. had a nice chicken linguine dish. beautiful atmosphere sat outside in sunshine. very reasonable price for freshly cooked delicious food. would recommend! [read more](#). In pleasant weather you can even eat and drink in the outdoor area, and there is no-charge WiFi. The premises on site are accessible, and therefore no problem for customers with wheelchairs or physical limitations. What [Olivia S](#) doesn't like about Folk: Great bar ruined by excessively loud music and self centred unpleasant staff, we went early evening requests for music to be turned down ignored by staff and manager instructed DJ to ignore customers and pu volume up. Our group felt discriminated against and on asking younger customers if they wanted the music so loud they said not. [read more](#). For those who want to **a cocktail after work** and hang out with friends, Folk from Manchester is a good bar, Moreover, the menu of this gastropub offers a good and especially large variety of beers from the region and the world that are definitely worth a try. The kitchen of the Folk also offers many international menus, And of course, you should also try the delicious burgers, with sides such as fries, salads, or wedges served.

Folk Menu

Non alcoholic drinks

WATER

Alcoholic Drinks

BEER

Sandwiches

THE VEGGIE

Halloumi

HALLOUMI

Tageskarte - Donnerstag

LINGUINE

Happy Hour - Classic Cocktails

BLOODY MARY

Coffee

CAFÉ

Drinks

DRINKS

Restaurant Category



VEGETARIAN

BAR

DESSERT

Ingredients Used



MUSHROOMS

BEEF

CHICKEN

These types of dishes are being served

TOSTADAS

TUNA STEAK

BURGER



Folk Menu



Folk

169-171 Burton Rd, Manchester,
United Kingdom

Opening Hours:

Sunday 10:00-22:30
Monday 12:00-23:00
Tuesday 12:00-23:00
Wednesday 12:00-23:00
Thursday 10:00-00:00
Friday 10:00-01:00
Saturday 10:00-01:00

Made with menulist.menu

 gallery image

