



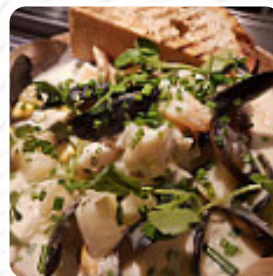
The Rising Sun Country Pub Menu

<https://menulist.menu>

112 Station Road, Cheshire East, United Kingdom

01838,+441782776235 - <https://www.facebook.com/risingsuncountrypub?>

ce=extnet&utm_medium=Yext&y_source=1_MTAwOTgwNzQxNC03NjktbG9jYXRpb24ud2Vic2l0ZC



On this homepage, you can find the **complete [menu](#)** of **The Rising Sun Country Pub** from Cheshire East.

Currently, there are 17 meals and drinks available. For changing offers, please contact the owner of the restaurant directly. You can also contact them through their website. What [Stuart P](#) likes about The Rising Sun Country Pub:

A welcoming pub serving delicious food. Took my children out for lunch and they both ordered Panini's, I ordered something off the specials board. Food was excellent and cooked to order and fresh. Service was great and we were well looked after we had a lovely time!! [read more](#). The restaurant and its premises are wheelchair accessible and thus usable with a wheelchair or physical limitations, Depending on the weather, you can also sit outside and eat. WLAN is available free of charge. What [Simon 20211](#) doesn't like about The Rising Sun Country Pub:

Below average pub food. Staff were friendly. This place used to serve up great food, until it was taken over. Its good Trip Adviser rating relates to the previous owners. Just really a drinking pub now, that sells a bit of below average food on the side. [read more](#). The Rising Sun Country Pub from Cheshire East prepares delicious dishes, refined with the famous spices and (fish-)sauces of the Thai cuisine, along with plenty of freshly harvested vegetables, [seafood](#) and meat, there are also [tasty vegetarian menus](#) on the menu. It goes without saying that a suitable drink completes a meal; therefore this gastropub presents a sophisticated variety of tasty and regional alcoholic options, be it beer or wine, For breakfast a **delicious brunch** is offered here.

The Rising Sun Country Pub Menu



Main courses

LASAGNA

Fish dishes

FISH

Drinks

DRINKS

Restaurant Category

BAR

Dessert

CHEESECAKE

CRÈME BRÛLÉE

Ingredients Used

DUCK

PORK MEAT

BEEF

SALMON

These types of dishes are being served

ROAST BEEF

LAMB

FISH

PANINI

SALAD

BURGER

TURKEY

The Rising Sun Country Pub Menu



The Rising Sun Country Pub

112 Station Road, Cheshire East,
United Kingdom

Opening Hours:

Sunday 12:00-22:00
Monday 12:00-22:00
Tuesday 12:00-22:00
Wednesday 12:00-22:30
Thursday 12:00-22:30
Friday 12:00-00:00
Saturday 12:00-00:00

Made with menulist.menu

