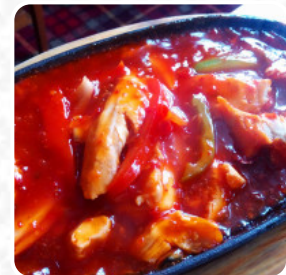
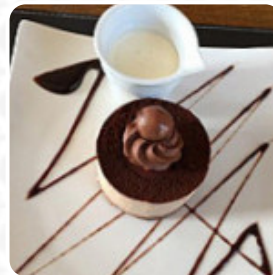
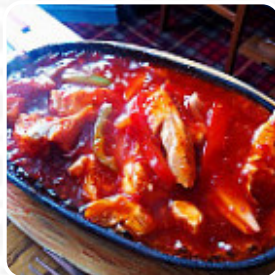




## The Ash Inn Menu

<https://menuweb.menu>

105 Wombwell Lane, Barnsley, United Kingdom  
+441226341646 - <https://timelessinns.com>



A **comprehensive [menu](https://menuweb.menu)** of **The Ash Inn** from Barnsley covering all **16** courses and drinks can be found here on the card. The Ash Inn, a once-beloved local pub, has recently experienced a mixed bag of reviews following its refurbishment. While many patrons hail the venue's welcoming atmosphere, excellent customer service, and a diverse menu with generous portions, there are concerns regarding cleanliness and food quality. Some visitors report poorly cooked meals, dirty cutlery, and unkempt staff, suggesting a decline in standards. Nevertheless, the ambiance and selection of drinks remain appealing. The pub appears to be regaining its status as a cozy spot for families and friends, but consistency in food quality and hygiene needs attention to truly satisfy its returning guests.

# The Ash Inn Menu



## Seafood

PRAWN

## Indian

ROTI

## Restaurant Category

BAR

## Drinks

BEER

DRINKS

## These Types Of Dishes

## Are Being Served

FISH

TURKEY

MEAT

TUNA STEAK

CHICKEN

## Ingredients Used

SALMON

MINT

POTATOES

GARLIC

CHEESE

PORK MEAT

---

## The Ash Inn

105 Wombwell Lane, Barnsley,  
United Kingdom

### Opening Hours:

Monday 16:00-22:00  
Tuesday 12:00-22:00  
Wednesday 12:00-22:00  
Thursday 12:00-22:00  
Friday 12:00-23:59  
Saturday 12:00-00:30  
Sunday 12:00-23:00

Made with [menuweb.menu](https://menuweb.menu)

