

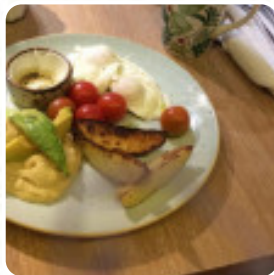


## ***Wondertree Terminal 2 Menu***

<https://menulist.menu>

Heathrow Terminal 2, Slough, United Kingdom

+442089767720 - <https://www.trgconcessions.co.uk/our-locations/location/London%20Heathrow%20Airport>



A comprehensive [menu](#) of Wondertree Terminal 2 from Slough covering all 15 courses and drinks can be found here on the food list. For seasonal or weekly deals, please get in touch via phone or use the contact details provided on the website. You can use the WLAN of the place at no extra cost, Depending on the weather conditions, you can also sit outside and have something. The premises on site are accessible, and therefore no problem for clientele with wheelchairs or physiological limitations. At Wondertree Terminal 2 in Slough, there's a **diverse brunch** in the morning where you can eat as much as you want enjoy, Of course, you also have to try the **tasty burgers**, that come with sides like fries, salads, or wedges provided. There are also exquisite menus available, typical for Europe, Particularly fans of the British cuisine are excited about the extensive selection of traditional meals and love the typical English cuisine.

# Wondertree Terminal 2 Menu



## Smoothies

SMOOTHIE

## Fish

SMOKED SALMON

## French

CROISSANT

## Restaurant Category

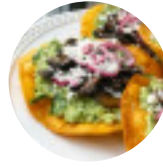
MEXICAN

## Coffee

MOCHA

CAFÉ

*These types of dishes are being served*



TOSTADAS

SALAD

TUNA STEAK

FISH

## Ingredients Used

BACON

EGG

AVOCADO

SALMON

CHICKEN

# *Wondertree Terminal 2 Menu*



## *Wondertree Terminal 2*

Heathrow Terminal 2, Slough,  
United Kingdom

**Opening Hours:**  
Sunday 07:00-18:00  
Monday 07:00-18:00  
Tuesday 07:00-18:00  
Wednesday 07:00-18:00  
Thursday 07:00-18:00  
Friday 07:00-18:00  
Saturday 07:00-18:00

Made with [menulist.menu](https://menulist.menu)

 gallery image

