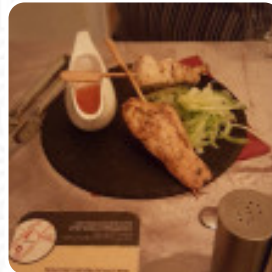




The Straw Bear B&b Menu

<https://menulist.menu>

103 Drybread Road, Whittlesey, Fenland, United Kingdom
+441733351506,+441733203105 - <http://thestrabear.co.uk/>



A comprehensive [menu](#) of The Straw Bear B&b from Fenland covering all 15 dishes and drinks can be found here on the card. For **changing offers**, please get in touch via phone or use the contact details provided on the website. What [User](#) likes about The Straw Bear B&b:

we ate here last night. the tables were all reserved with cute personalized wooden signs for each couple. the meal was 2 courses for £15 a bottle of wine for £10. we chose steak for our main course that was cooked to perfection. the portion sizes were as normal regardless of the £15 deal. the service was fast and everything all night. in any case recommend. [read more](#). The restaurant offers complimentary WiFi for its guests, And into the accessible rooms also come customers with wheelchairs or physiological limitations. If the weather are right, you can also eat and drink outside. What [User](#) doesn't like about The Straw Bear B&b:

No atmosphere, not helpful bar staff. Unkempt outside. The place was clean, especially the toilet. There was nothing to make me want to go back. It has great potential. [read more](#). If you want to a beer after work and hang out with friends, The Straw Bear B&b from Fenland is a good bar, Particularly fans of the British cuisine are excited about the large selection of traditional dishes and love the typical English cuisine. In case you want to have breakfast, a hearty brunch is offered to you, The visitors of the establishment also consider the comprehensive variety of various **coffee and tea specialities** that the establishment offers.

The Straw Bear B&b Menu



Alcoholic Drinks

BEER

Main courses

RIBS

Dessert

CHEESECAKE

Hot drinks

TEA

Bottles of Wine & Water

BOTTLE OF WINE

Coffee

CAFÉ

Restaurant Category

VEGAN

Indian

ROTI

CHICKEN CURRY

These types of dishes are being served



ICE CREAM

TUNA STEAK

FISH

Ingredients Used

BEEF

CHEESE

CHICKEN

MEAT

PORK MEAT

The Straw Bear B&b Menu



The Straw Bear B&b

103 Drybread Road, Whittlesey,
Fenland, United Kingdom

Opening Hours:

Sunday 12:00-22:00
Monday 16:00-21:00
Tuesday 16:00-21:00
Wednesday 16:00-21:00
Thursday 16:00-21:00
Friday 14:00-00:00
Saturday 07:00-00:00

Made with menulist.menu

 gallery image

